

PAH120Hu01

Polyclonal Antibody to Stress Induced Phosphoprotein 1 (STIP1)

Organism Species: *Homo sapiens (Human)*

Instruction manual

FOR RESEARCH USE ONLY

NOT FOR USE IN CLINICAL DIAGNOSTIC PROCEDURES

13th Edition (Revised in Aug, 2023)

[PROPERTIES]

Source: Polyclonal antibody preparation

Host: Rabbit

Purification: Antigen-specific affinity chromatography followed by Protein A affinity chromatography

Traits: Liquid

Concentration: 0.5mg/mL

UOM: 100 μ L

Cross Reactivity: Bovine

Applications: WB; IHC

[IMMUNOGEN]

Immunogen: Recombinant STIP1 (Met1~Lys169) expressed in *E.coli*

Accession No.: RPH120Hu01

[APPLICATIONS]

Western blotting: 0.01-2 μ g/mL;

Immunohistochemistry: 5-20 μ g/mL;

Optimal working dilutions must be determined by end user.

[FORMULATION]

Form & Buffer: Supplied as solution form in 0.01M PBS, pH7.4, containing 0.05% Proclin-300, 50% glycerol.

[STORAGE AND STABILITY]

Storage: Avoid repeated freeze/thaw cycles.

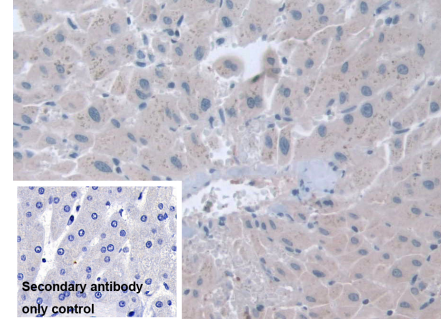
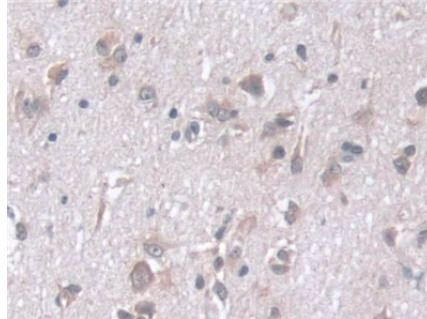
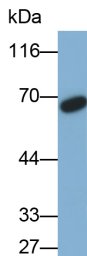
Store at 4°C for frequent use.

Aliquot and store at -20°C for 24 months.

Stability Test: The thermal stability is described by the loss rate. The loss rate was determined by accelerated thermal degradation test, that is, incubate the protein at 37°C for 48h, and no obvious degradation and precipitation were observed. The loss rate is less than 5% within the

expiration date under appropriate storage condition.

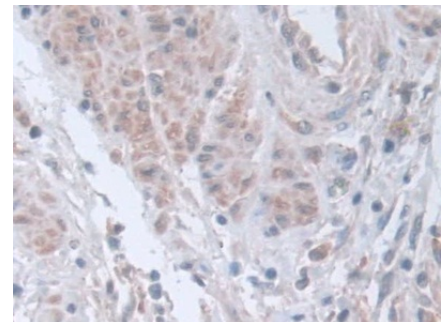
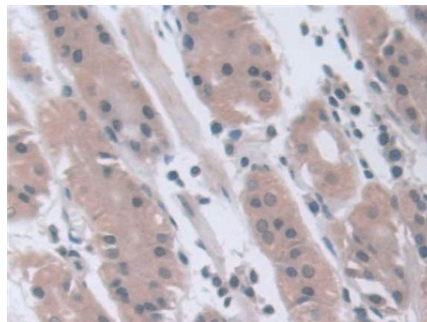
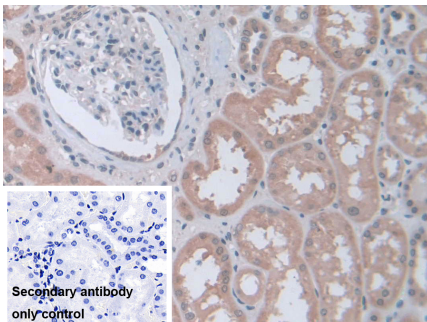
[IDENTIFICATION]



Western Blot; Sample: Jurkat cell lysate
 Primary Ab: 0.2µg/ml Rabbit Anti-Human STIP1 Antibody
 Second Ab: 0.2µg/ml HRP-Linked Caprine Anti-Rabbit IgG Polyclonal Antibody
 (Catalog: SAA544Rb19)

DAB staining on IHC-P; Samples: Human Cerebrum Tissue;
 Primary Ab: 10µg/ml Rabbit Anti-Human STIP1 Antibody
 Second Ab: 2µg/mL HRP-Linked Caprine Anti-Rabbit IgG Polyclonal Antibody
 (Catalog: SAA544Rb19)

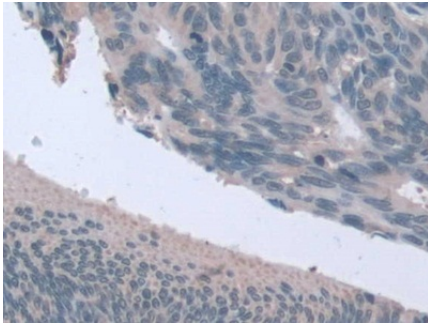
DAB staining on IHC-P; Samples: Human Liver Tissue;
 Primary Ab: 10µg/ml Rabbit Anti-Human STIP1 Antibody
 Second Ab: 2µg/mL HRP-Linked Caprine Anti-Rabbit IgG Polyclonal Antibody
 (Catalog: SAA544Rb19)



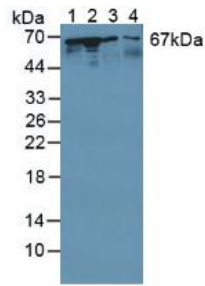
DAB staining on IHC-P; Samples: Human Kidney Tissue;
 Primary Ab: 10µg/ml Rabbit Anti-Human STIP1 Antibody
 Second Ab: 2µg/mL HRP-Linked Caprine Anti-Rabbit IgG Polyclonal Antibody
 (Catalog: SAA544Rb19)

DAB staining on IHC-P; Samples: Human Stomach Tissue;
 Primary Ab: 10µg/ml Rabbit Anti-Human STIP1 Antibody
 Second Ab: 2µg/mL HRP-Linked Caprine Anti-Rabbit IgG Polyclonal Antibody
 (Catalog: SAA544Rb19)

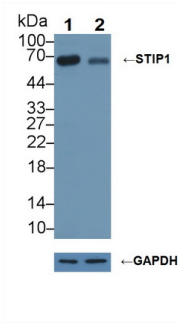
DAB staining on IHC-P; Samples: Human Prostate cancer Tissue;
 Primary Ab: 10µg/ml Rabbit Anti-Human STIP1 Antibody
 Second Ab: 2µg/mL HRP-Linked Caprine Anti-Rabbit IgG Polyclonal Antibody
 (Catalog: SAA544Rb19)



DAB staining on IHC-P;
 Samples: Human Colorectal cancer
 Tissue;
 Primary Ab: 10µg/ml Rabbit Anti-
 Human STIP1 Antibody
 Second Ab: 2µg/mL HRP-Linked
 Caprine Anti-Rabbit IgG Polyclonal
 Antibody
 (Catalog: SAA544Rb19)



Western Blot; Sample: Lane1: Human
 Lung lysate; Lane2: Jurkat cell lysate;
 Lane3: Bovine Testis lysate; Lane4:
 Bovine Spleen lysate
 Primary Ab: 1ug/ml Rabbit Anti-Human
 STIP1 Antibody
 Second Ab: 0.2µg/mL HRP-Linked
 Caprine Anti-Rabbit IgG Polyclonal
 Antibody
 (Catalog: SAA544Rb19)



Knockout Varification:
 Lane 1: Wild-type Jurkat cell lysate;
 Lane 2: STIP1 knockout Jurkat cell
 lysate;
 Predicted MW: 68,63,60kd
 Observed MW: 65kd
 Primary Ab: 1µg/ml Rabbit Anti-Human
 STIP1 Antibody
 Second Ab: 0.2µg/mL HRP-Linked
 Caprine Anti-Rabbit IgG Polyclonal
 Antibody
 (Catalog: SAA544Rb19)

[IMPORTANT NOTE]

The kit is designed for research use only, we will not be responsible for any issue if the kit was used in clinical diagnostic or any other procedures.