

**PAC256Hu01**  
**Polyclonal Antibody to Survival Of Motor Neuron 1, Telomeric (SMN1)**  
**Organism Species: Homo sapiens (Human)**  
*Instruction manual*

FOR IN VITRO USE AND RESEARCH USE ONLY  
NOT FOR USE IN CLINICAL DIAGNOSTIC PROCEDURES

---

---

12th Edition (Revised in Aug, 2016)

## **[ PROPERTIES ]**

**Source:** Polyclonal antibody preparation

**Host:** Rabbit

**Purification:** Antigen-specific Affinity Chromatography.

**Traits:** Liquid

**Concentration:** 200µg/mL

**UOM:** 100µg

**Applications:** WB; ICC; IHC-P; IHC-F; ELISA; IP; IF; FCM.

## **[ IMMUNOGEN ]**

**Immunogen:** Recombinant SMN1 (Ala2~Asn294) expressed in *E.coli*.

**Accession No.:** RPC256Hu01

## **[ APPLICATIONS ]**

Western blotting: 0.5-2ug/ml

Immunocytochemistry in formalin fixed cells: 5-20ug/ml

Immunohistochemistry in formalin fixed frozen section: 5-20ug/ml

Immunohistochemistry in paraffin section: 5-20ug/ml

Enzyme-linked Immunosorbent Assay: 0.05-2ug/ml

Optimal working dilutions must be determined by end user.

## **[ FORMULATION ]**

**Form & Buffer:** Supplied as solution form in 0.01M PBS, pH7.4, containing 0.05% Proclin-300, 50% glycerol.

## **[ QUALITY CONTROL ]**

**Content:** The quality control contains recombinant SMN1 disposed in loading buffer.

**Usage:** 10uL per well when 3,3'-Diaminobenzidine(DAB) as the substrate.  
5uL per well when used in enhanced chemiluminescent (ECL).

**Note:** The quality control is specifically manufactured as the positive control.  
Not used for other purposes.

**Loading Buffer:** 100mM Tris(pH6.8), 1% SDS, 150mM NaCl, 50% glycerol, 0.02% BPB, 50mM DTT and 0.02% NaN<sub>3</sub>.

## **[ STORAGE AND STABILITY ]**

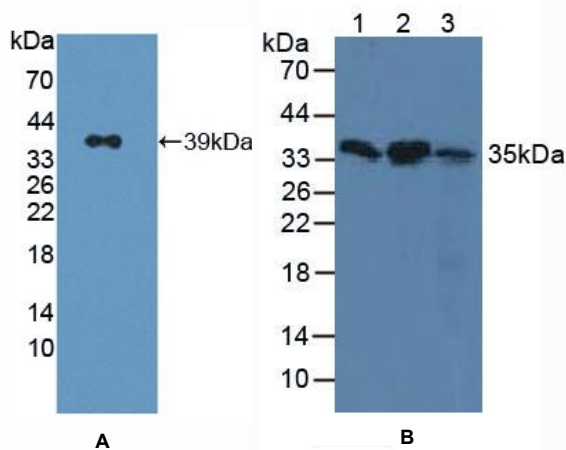
**Storage:** Avoid repeated freeze/thaw cycles.

Store at 4°C for frequent use.

Aliquot and store at -20°C for 12 months.

**Stability Test:** The thermal stability is described by the loss rate. The loss rate was determined by accelerated thermal degradation test, that is, incubate the protein at 37°C for 48h, and no obvious degradation and precipitation were observed. The loss rate is less than 5% within the expiration date under appropriate storage condition.

## **[ IDENTIFICATION ]**



**Figure 1. Western Blot**

**A. Sample:** Recombinant SMN1, Human

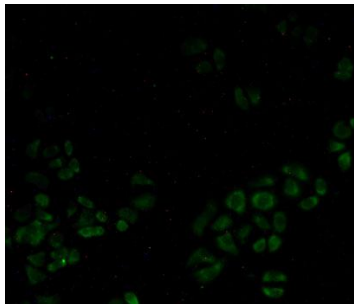
**B. Lane1:** Human HeLa Cells

Lane2: Human 293T Cells

Lane3: Human hepG2 Cells

Primary Ab: 3µg/mL Rabbit Anti-Human SMN1 Ab

Second Ab: 1:2000 Dilution of HRP-Linked Guinea pig Anti-Rabbit Ab (Catalog: SAA544Rb59)



**Figure 2. FITC staining on  
IHC-P**

**Samples:**

**Human HeLa Cells**