

PAG751Hu01

Polyclonal Antibody to TNF Receptor Associated Factor 6 (TRAF6)

Organism Species: *Homo sapiens (Human)*

Instruction manual

FOR RESEARCH USE ONLY

NOT FOR USE IN CLINICAL DIAGNOSTIC PROCEDURES

13th Edition (Revised in Aug, 2023)

[PROPERTIES]

Source: Polyclonal antibody preparation

Host: Rabbit

Purification: Antigen-specific affinity chromatography followed by Protein A affinity chromatography

Traits: Liquid

Concentration: 0.5mg/mL

UOM: 100µl

Cross Reactivity: Mouse

Applications: WB,IHC,ICC/IF

[IMMUNOGEN]

Immunogen: Recombinant TRAF6 (Ala153~Pro423) expressed in *E.coli*

Accession No.: RPG751Hu01

[APPLICATIONS]

Western blotting: 0.01-2µg/mL;

Immunohistochemistry: 5-20µg/mL;

Immunocytochemistry: 5-20µg/mL;

Optimal working dilutions must be determined by end user.

[FORMULATION]

Form & Buffer: Supplied as solution form in 0.01M PBS, pH7.4, containing 0.05% Proclin-300, 50% glycerol.

[STORAGE AND STABILITY]

Storage: Avoid repeated freeze/thaw cycles.

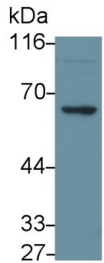
Store at 4°C for frequent use.

Aliquot and store at -20°C for 24 months.

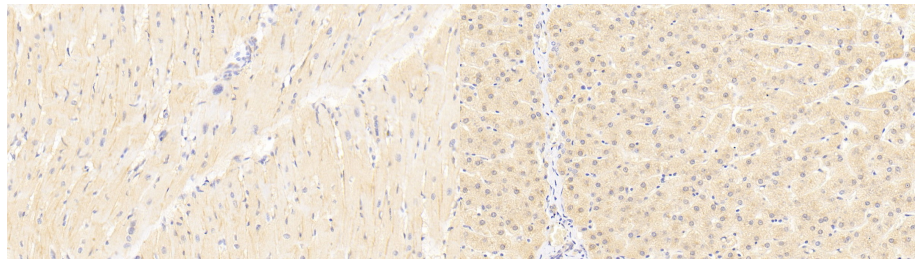
Stability Test: The thermal stability is described by the loss rate. The loss rate was determined by accelerated thermal degradation test, that is, incubate the protein at 37°C for 48h, and no

obvious degradation and precipitation were observed. The loss rate is less than 5% within the expiration date under appropriate storage condition.

[IDENTIFICATION]

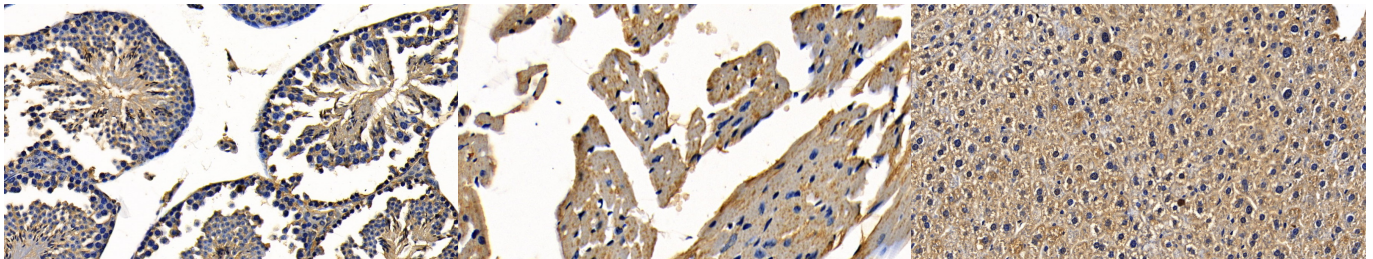


Western Blot; Sample: Mouse Stomach lysate Primary Ab: 0.5µg/ml Rabbit Anti-Human TRAF6 Antibody Second Ab: 0.2µg/mL HRP-Linked Caprine Anti-Rabbit IgG Polyclonal Antibody (Catalog: SAA544Rb19)



DAB staining on IHC-P; Samples: Human Cardiac Muscle Tissue; Primary Ab: 20µg/ml Rabbit Anti-Human TRAF6 Antibody Second Ab: 2µg/mL HRP-Linked Caprine Anti-Rabbit IgG Polyclonal Antibody (Catalog: SAA544Rb19)

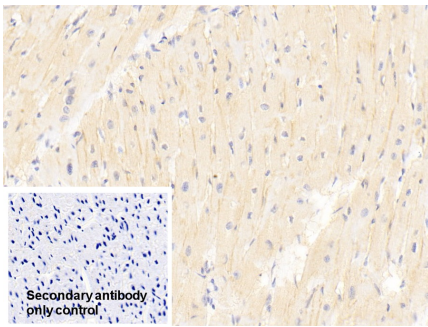
DAB staining on IHC-P; Samples: Human Liver Tissue; Primary Ab: 20µg/ml Rabbit Anti-Human TRAF6 Antibody Second Ab: 2µg/mL HRP-Linked Caprine Anti-Rabbit IgG Polyclonal Antibody (Catalog: SAA544Rb19)



DAB staining on IHC-P; Sample: Mouse Testis Tissue; Primary Ab: 20µg/ml Rabbit Anti-Human TRAF6 Antibody Second Ab: 2µg/mL HRP-Linked Caprine Anti-Rabbit IgG Polyclonal Antibody (Catalog: SAA544Rb19)

DAB staining on IHC-P; Sample: Mouse Cardiac Muscle Tissue; Primary Ab: 20µg/ml Rabbit Anti-Human TRAF6 Antibody Second Ab: 2µg/mL HRP-Linked Caprine Anti-Rabbit IgG Polyclonal Antibody (Catalog: SAA544Rb19)

DAB staining on IHC-P; Sample: Mouse Liver Tissue; Primary Ab: 20µg/ml Rabbit Anti-Human TRAF6 Antibody Second Ab: 2µg/mL HRP-Linked Caprine Anti-Rabbit IgG Polyclonal Antibody (Catalog: SAA544Rb19)



DAB staining on IHC-P;

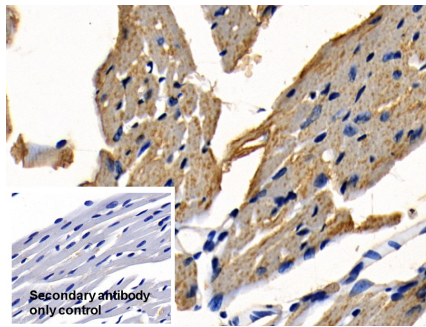
Sample: Human Cardiac Muscle Tissue

Primary Ab: 20µg/ml Rabbit Anti-Human TRAF6 Antibody

Control: Used PBS instead of primary antibody

Second Ab: 2µg/ml HRP-Linked Caprine Anti-Rabbit IgG Polyclonal Antibody

(Catalog: SAA544Rb19)



DAB staining on IHC-P;

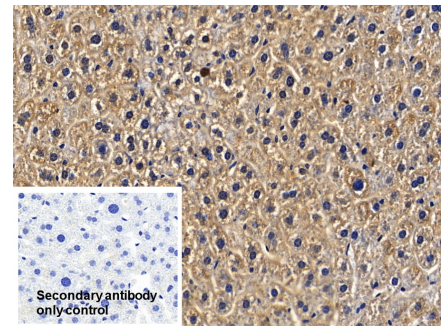
Sample: Mouse Cardiac Muscle Tissue

Primary Ab: 20µg/ml Rabbit Anti-Human TRAF6 Antibody

Control: Used PBS instead of primary antibody

Second Ab: 2µg/ml HRP-Linked Caprine Anti-Rabbit IgG Polyclonal Antibody

(Catalog: SAA544Rb19)



DAB staining on IHC-P;

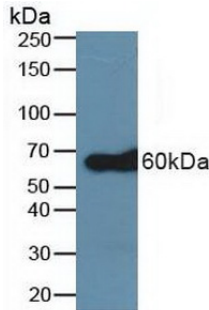
Sample: Mouse Liver Tissue

Primary Ab: 20µg/ml Rabbit Anti-Human TRAF6 Antibody

Control: Used PBS instead of primary antibody

Second Ab: 2µg/ml HRP-Linked Caprine Anti-Rabbit IgG Polyclonal Antibody

(Catalog: SAA544Rb19)

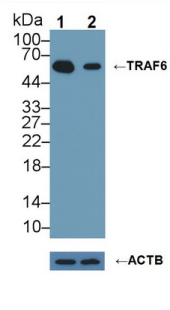


Western Blot; Sample: A431 cell lysate

Primary Ab: 5µg/ml Rabbit Anti-Human TRAF6 Antibody

Second Ab: 0.2µg/mL HRP-Linked Caprine Anti-Rabbit IgG Polyclonal Antibody

(Catalog: SAA544Rb19)



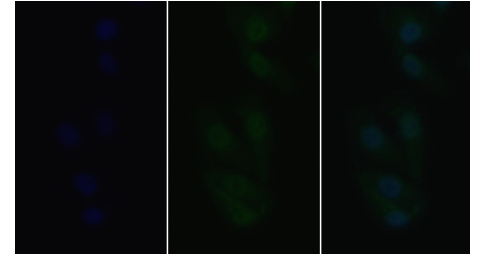
Knockout Verification:

Lane 1: Wild-type A431 cell lysate;
Lane 2: TRAF6 knockout A431 cell lysate;

Predicted MW: 60kd
Observed MW: 60kd

Primary Ab: 5µg/ml Rabbit Anti-Human TRAF6 Antibody

Second Ab: 0.2µg/mL HRP-Linked Caprine Anti-Rabbit IgG Polyclonal Antibody



FITC staining on IF;

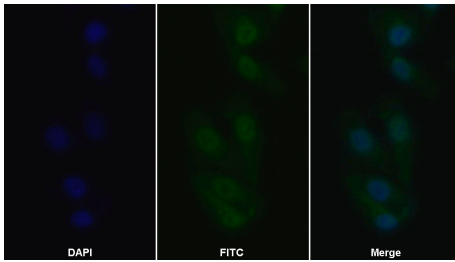
Sample: Human Hela cell;

Primary Ab: 20µg/ml Rabbit Anti-Human TRAF6 Antibody

Second Ab: 2µg/ml FITC-Linked Caprine Anti-Rabbit IgG Polyclonal Antibody

(Catalog: SAA544Rb18)

(Catalog: SAA544Rb19)



FITC staining on IF;

Sample: HeLa cell

Primary Ab: 20µg/ml Rabbit Anti-

Human TRAF6 Antibody

Second Ab: 2µg/ml FITC-Linked

Caprine Anti-Rabbit IgG Polyclonal

Antibody

(Catalog: SAA544Rb11)

[**IMPORTANT NOTE**]

The kit is designed for research use only, we will not be responsible for any issue if the kit was used in clinical diagnostic or any other procedures.