

PAA615Hu01

Polyclonal Antibody to Thrombin Activatable Fibrinolysis Inhibitor (TAFI)

Organism Species: Homo sapiens (Human)

Instruction manual

FOR IN VITRO USE AND RESEARCH USE ONLY
NOT FOR USE IN CLINICAL DIAGNOSTIC PROCEDURES

12th Edition (Revised in Aug, 2016)

[PROPERTIES]

Source: Polyclonal antibody preparation

Host: Rabbit

Purification: Antigen-specific Affinity Chromatography.

Traits: Liquid

Concentration: 200µg/mL

UOM: 10µg

Applications: WB; ICC; IHC-P; IHC-F; ELISA; IP; IF; FCM.

[IMMUNOGEN]

Immunogen: Recombinant TAFI (Glu138~Val423) expressed in *E.coli*.

Accession No.: RPA615Hu01

[APPLICATIONS]

Western blotting: 0.5-2ug/ml

Immunocytochemistry in formalin fixed cells: 5-20ug/ml

Immunohistochemistry in formalin fixed frozen section: 5-20ug/ml

Immunohistochemistry in paraffin section: 5-20ug/ml

Enzyme-linked Immunosorbent Assay: 0.05-2ug/ml

Optimal working dilutions must be determined by end user.

[FORMULATION]

Form & Buffer: Supplied as solution form in 0.01M PBS, pH7.4, containing 0.05% Proclin-300, 50% glycerol.

[STORAGE AND STABILITY]

Storage: Avoid repeated freeze/thaw cycles.

Store at 4°C for frequent use.

Aliquot and store at -20°C for 12 months.

Stability Test: The thermal stability is described by the loss rate. The loss rate was determined by accelerated thermal degradation test, that is, incubate the protein at 37°C for 48h, and no obvious degradation and precipitation were

observed. The loss rate is less than 5% within the expiration date under appropriate storage condition.

[IDENTIFICATION]

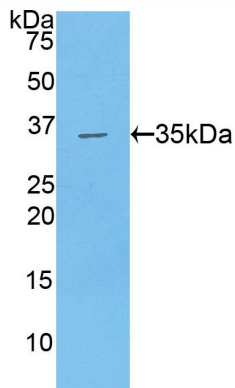


Figure 1. Western Blot

Sample: Recombinant TAFI, Human

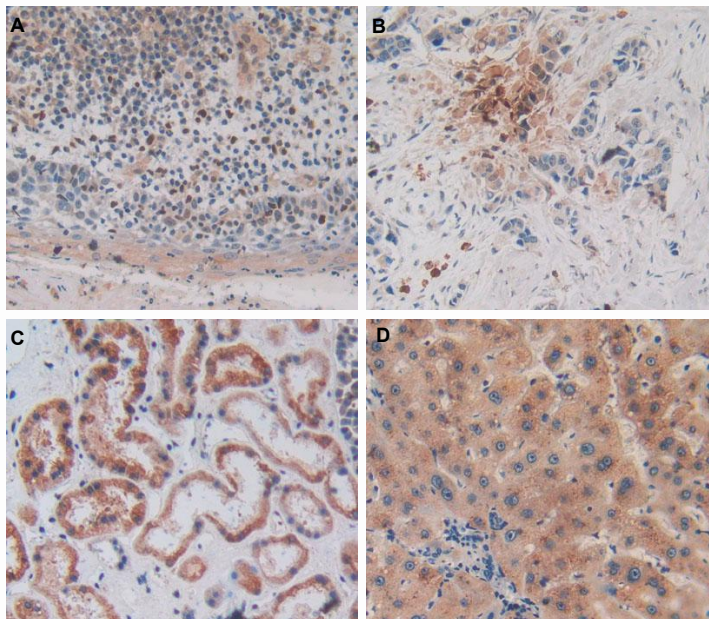


Figure 2. DAB staining on IHC-P

Samples:

- A. Human Skin Cancer Tissue
- B. Human Breast Cancer Tissue
- C. Human Kidney Tissue
- D. Human Liver Tissue