

PAB991Hu01

Polyclonal Antibody to Toll Like Receptor 8 (TLR8)

Organism Species: *Homo sapiens (Human)*

Instruction manual

FOR RESEARCH USE ONLY

NOT FOR USE IN CLINICAL DIAGNOSTIC PROCEDURES

13th Edition (Revised in Aug, 2023)

[**PROPERTIES**]

Source: Polyclonal antibody preparation

Host: Rabbit

Purification: Antigen-specific affinity chromatography followed by Protein A affinity chromatography

Traits: Liquid

Concentration: 0.5mg/mL

UOM: 10 μ L

Cross Reactivity: Mouse;Rat;Porcine.

Applications: WB; IHC; ICC/IF

[**IMMUNOGEN**]

Immunogen: Recombinant TLR8 (Leu844~Lys1039) expressed in *E.coli*

Accession No.: RPB991Hu01

[**APPLICATIONS**]

Western blotting: 0.01-2 μ g/mL

Immunohistochemistry: 5-20 μ g/mL

Immunocytochemistry: 5-20 μ g/mL

Optimal working dilutions must be determined by end user.

[**FORMULATION**]

Form & Buffer: Supplied as solution form in PBS, pH7.4, containing 0.02% NaN₃, 50% glycerol.

[**STORAGE AND STABILITY**]

Storage: Avoid repeated freeze/thaw cycles.

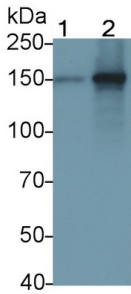
Store at 4°C for frequent use.

Aliquot and store at -20°C for 24 months.

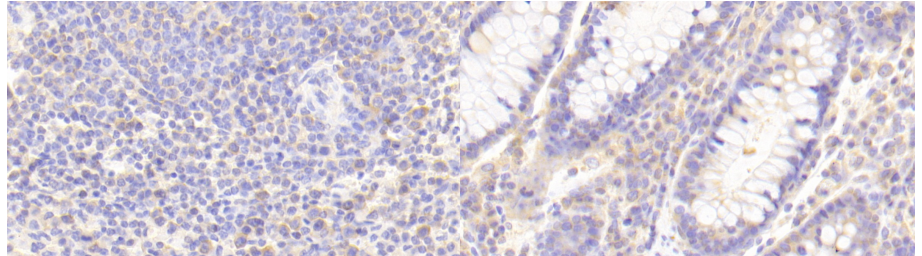
Stability Test: The thermal stability is described by the loss rate. The loss rate was determined by accelerated thermal degradation test, that is, incubate the protein at 37°C for 48h, and no

obvious degradation and precipitation were observed. The loss rate is less than 5% within the expiration date under appropriate storage condition.

[IDENTIFICATION]



Western Blot; Sample: Lane1: Mouse Liver lysate; Lane2: Rat Liver lysate
 Primary Ab: 0.5µg/ml Rabbit Anti-Human TLR8 Antibody Second Ab: 0.2µg/mL HRP-Linked Caprine Anti-Rabbit IgG Polyclonal Antibody
 (Catalog: SAA544Rb19)



DAB staining on IHC-P; Samples: Human Spleen Tissue; Primary Ab: 20?g/ml Rabbit Anti-Human TLR8 Antibody Second Ab: 2µg/mL HRP-Linked Caprine Anti-Rabbit IgG Polyclonal Antibody (Catalog: SAA544Rb19)

DAB staining on IHC-P; Samples: Human Colon Tissue; Primary Ab: 20?g/ml Rabbit Anti-Human TLR8 Antibody Second Ab: 2µg/mL HRP-Linked Caprine Anti-Rabbit IgG Polyclonal Antibody
 (Catalog: SAA544Rb19)

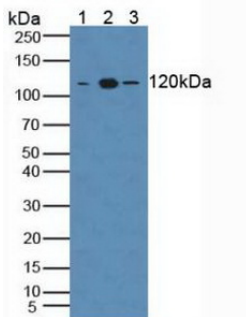
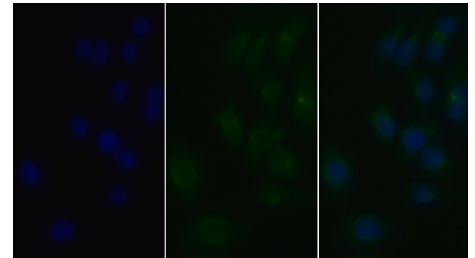
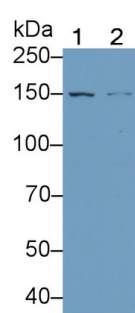


Figure. Western Blot; Sample: Lane1: Human Serum; Lane2: Mouse Liver Tissue; Lane3: Mouse Placenta Tissue.

Western Blot; Sample: Lane1: THP1 cell lysate; Lane2: K562 cell lysate
 Primary Ab: 0.8µg/ml Rabbit Anti-Human TLR8 Antibody
 Second Ab: 0.2µg/mL HRP-Linked Caprine Anti-Rabbit IgG Polyclonal Antibody
 (Catalog: SAA544Rb19)



FITC staining on IF; Sample: Human HeLa cell; Primary Ab: 20ug/ml Rabbit Anti-Human TLR8 Antibody Second Ab: 2?g/ml FITC-Linked Caprine Anti-Rabbit IgG Polyclonal Antibody
 (Catalog: SAA544Rb18)

[IMPORTANT NOTE]

The kit is designed for research use only, we will not be responsible for any issue if the kit was used in clinical diagnostic or any other procedures.