

**PAB171Hu01**

**Polyclonal Antibody to Transferrin Receptor (TFR)**

**Organism Species: *Homo sapiens (Human)***

***Instruction manual***

**FOR RESEARCH USE ONLY**

**NOT FOR USE IN CLINICAL DIAGNOSTIC PROCEDURES**

---

13th Edition (Revised in Aug, 2023)

### **[ PROPERTIES ]**

**Source:** Polyclonal antibody preparation

**Host:** Rabbit

**Purification:** Antigen-specific affinity chromatography followed by Protein A affinity chromatography

**Traits:** Liquid

**Concentration:** 0.5mg/mL

**UOM:** 100µL

**Cross Reactivity:** N/A

**Applications:** WB; IHC

### **[ IMMUNOGEN ]**

**Immunogen:** Recombinant TFR (Gly567~Gly744) expressed in *E.coli*

**Accession No.:** RPB171Hu01

### **[ APPLICATIONS ]**

Western blotting: 0.01-2µg/mL;

Immunohistochemistry: 5-20µg/mL;

Optimal working dilutions must be determined by end user.

### **[ FORMULATION ]**

**Form & Buffer:** Supplied as solution form in PBS, pH7.4, containing 0.02% NaN<sub>3</sub>, 50% glycerol.

### **[ STORAGE AND STABILITY ]**

**Storage:** Avoid repeated freeze/thaw cycles.

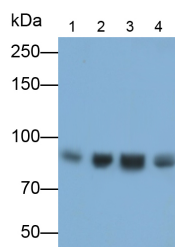
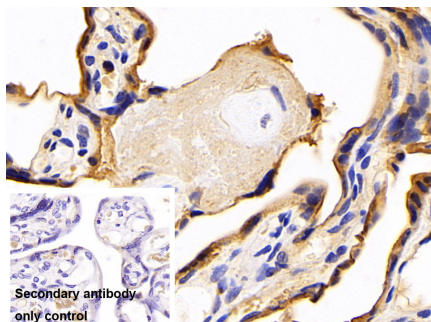
Store at 4°C for frequent use.

Aliquot and store at -20°C for 24 months.

**Stability Test:** The thermal stability is described by the loss rate. The loss rate was determined by accelerated thermal degradation test, that is, incubate the protein at 37°C for 48h, and no obvious degradation and precipitation were observed. The loss rate is less than 5% within the

expiration date under appropriate storage condition.

## [ IDENTIFICATION ]



DAB staining on IHC-P; Sample:	Western Blot; Samples: Lane1: Hela
Human Placenta Tissue Primary Ab:	cell lysate; Lane2: MCF7 cell lysate;
10µg/ml Rabbit Anti-Human TFR	Lane3: K562 cell lysate; Lane4: Jurkat
Antibody Control: Used PBS instead of	cell lysate;
primary antibody Second Ab: 2?g/ml	Primary Ab: 0.1µg/ml Rabbit Anti-
HRP-Linked Caprine Anti-Rabbit IgG	Human TFR Antibody
Polyclonal Antibody (Catalog:	Second Ab: 0.2?g/ml HRP-Linked
SAA544Rb19)	Caprine Anti-Rabbit IgG Polyclonal
	Antibody
	(Catalog: SAA544Rb19)

## [ IMPORTANT NOTE ]

The kit is designed for research use only, we will not be responsible for any issue if the kit was used in clinical diagnostic or any other procedures.