

**PAN011Hu01**

**Polyclonal Antibody to Transmembrane Protein 173 (TMEM173)**

**Organism Species: *Homo sapiens (Human)***

***Instruction manual***

FOR RESEARCH USE ONLY

NOT FOR USE IN CLINICAL DIAGNOSTIC PROCEDURES

---

13th Edition (Revised in Aug, 2023)

**[ PROPERTIES ]**

**Source:** Polyclonal antibody preparation

**Host:** Rabbit

**Purification:** Antigen-specific affinity chromatography followed by Protein A affinity chromatography

**Traits:** Liquid

**Concentration:** 0.5mg/ml

**UOM:** 100µl

**Cross Reactivity:** Mouse.

**Applications:** WB

**[ IMMUNOGEN ]**

**Immunogen:** Recombinant TMEM173 (Leu159~Pro373) expressed in *E.coli*

**Accession No.:** RPN011Hu01

**[ APPLICATIONS ]**

Western blotting: 0.01-2µg/mL;

Optimal working dilutions must be determined by end user.

**[ FORMULATION ]**

**Form & Buffer:** Supplied as solution form in 0.01M PBS, pH7.4, containing 0.05% Proclin-300, 50% glycerol.

**[ STORAGE AND STABILITY ]**

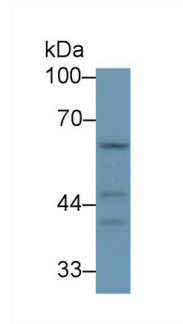
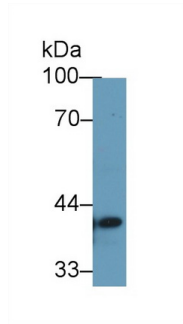
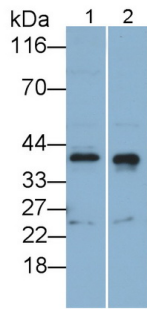
**Storage:** Avoid repeated freeze/thaw cycles.

Store at 4°C for frequent use.

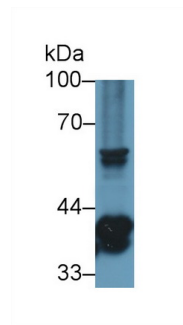
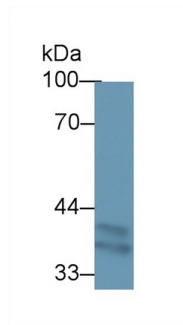
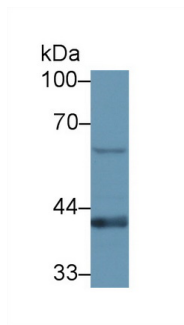
Aliquot and store at -20°C for 24 months.

**Stability Test:** The thermal stability is described by the loss rate. The loss rate was determined by accelerated thermal degradation test, that is, incubate the protein at 37°C for 48h, and no obvious degradation and precipitation were observed. The loss rate is less than 5% within the expiration date under appropriate storage condition.

**[ IDENTIFICATION ]**



Western Blot; Sample: Lane1: Human Lung lysate; Lane2: Mouse Thymus lysate	Western Blot; Sample: Human 293T cell lysate;	Western Blot; Sample: Human Placenta lysate;
Primary Ab: 0.2µg/ml Rabbit Anti-Human TMEM173 Antibody	Primary Ab: 1µg/ml Rabbit Anti-Human TMEM173 Antibody	Primary Ab: 1µg/ml Rabbit Anti-Human TMEM173 Antibody
Second Ab: 0.2µg/mL HRP-Linked Caprine Anti-Rabbit IgG Polyclonal Antibody (Catalog: SAA544Rb19)	Second Ab: 0.2µg/mL HRP-Linked Caprine Anti-Rabbit IgG Polyclonal Antibody (Catalog: SAA544Rb19)	Second Ab: 0.2µg/mL HRP-Linked Caprine Anti-Rabbit IgG Polyclonal Antibody (Catalog: SAA544Rb19)



Western Blot; Sample: Human Lung lysate;	Western Blot; Sample: Mouse Spleen lysate;	Western Blot; Sample: Mouse Thymus lysate;
Primary Ab: 1µg/ml Rabbit Anti-Human TMEM173 Antibody	Primary Ab: 1µg/ml Rabbit Anti-Human TMEM173 Antibody	Primary Ab: 1µg/ml Rabbit Anti-Human TMEM173 Antibody
Second Ab: 0.2µg/mL HRP-Linked Caprine Anti-Rabbit IgG Polyclonal Antibody (Catalog: SAA544Rb19)	Second Ab: 0.2µg/mL HRP-Linked Caprine Anti-Rabbit IgG Polyclonal Antibody (Catalog: SAA544Rb19)	Second Ab: 0.2µg/mL HRP-Linked Caprine Anti-Rabbit IgG Polyclonal Antibody (Catalog: SAA544Rb19)

**[ IMPORTANT NOTE ]**

The kit is designed for research use only, we will not be responsible for any issue if the kit was

used in clinical diagnostic or any other procedures.