

PAA133Mu01

Polyclonal Antibody to Tumor Necrosis Factor Alpha (TNF α)

Organism Species: *Mus musculus* (Mouse)

Instruction manual

FOR RESEARCH USE ONLY

NOT FOR USE IN CLINICAL DIAGNOSTIC PROCEDURES

13th Edition (Revised in Aug, 2023)

[PROPERTIES]

Source: Polyclonal antibody preparation

Host: Rabbit

Purification: Antigen-specific affinity chromatography followed by Protein A affinity chromatography

Traits: Liquid

Concentration: 0.5mg/mL

UOM: 100µL

Cross Reactivity: Human;Rat

Applications: WB; ICC/IF

[IMMUNOGEN]

Immunogen: Recombinant TNFα (Leu80~Leu235) expressed in *E.coli*

Accession No.: RPA133Mu01

[APPLICATIONS]

Western blotting: 0.01-2µg/mL;

Immunocytochemistry: 5-40µg/mL;

Optimal working dilutions must be determined by end user.

[FORMULATION]

Form & Buffer: Supplied as solution form in 0.01M PBS, pH7.4, containing 0.05% Proclin-300, 50% glycerol.

[STORAGE AND STABILITY]

Storage: Avoid repeated freeze/thaw cycles.

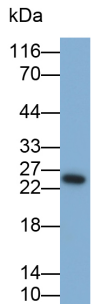
Store at 4°C for frequent use.

Aliquot and store at -20°C for 24 months.

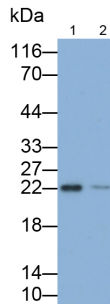
Stability Test: The thermal stability is described by the loss rate. The loss rate was determined by accelerated thermal degradation test, that is, incubate the protein at 37°C for 48h, and no obvious degradation and precipitation were observed. The loss rate is less than 5% within the

expiration date under appropriate storage condition.

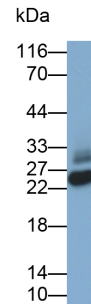
[IDENTIFICATION]



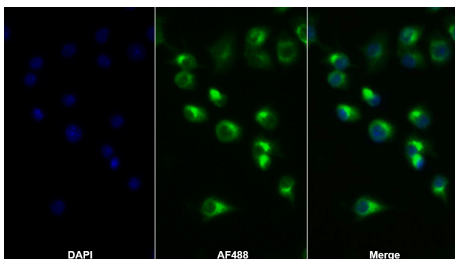
Western Blot; Sample: Rat Cerebrum lysate Primary Ab: 0.5µg/ml Rabbit Anti-Mouse TNFa Antibody Second Ab: 0.2?g/ml HRP-Linked Caprine Anti-Rabbit IgG Polyclonal Antibody (Catalog: SAA544Rb19)



Western Blot; Samples: Lane1: 293T cell lysate; Lane2: Raji cell lysate; Primary Ab: 0.2µg/ml Rabbit Anti-Mouse TNFa Antibody Second Ab: 0.2?g/ml HRP-Linked Caprine Anti-Rabbit IgG Polyclonal Antibody (Catalog: SAA544Rb19)



Western Blot; Sample: RAW264.7 cell lysate Primary Ab: 0.3µg/ml Rabbit Anti-Mouse TNFa Antibody Second Ab: 0.2?g/ml HRP-Linked Caprine Anti-Rabbit IgG Polyclonal Antibody (Catalog: SAA544Rb19)



FITC staining on IF; Sample: RAW264.7 cell treated with 5?g/ml Lipopolysaccharide(LPS) and 2µM Monensin for 1 night. Primary Ab: 40?g/ml Rabbit Anti-Mouse TNFa Antibody Second Ab: 1.5?g/ml FITC-Linked Caprine Anti-Rabbit IgG Polyclonal Antibody (Catalog: SAA544Rb18)

[IMPORTANT NOTE]

The kit is designed for research use only, we will not be responsible for any issue if the kit was used in clinical diagnostic or any other procedures.