

**PAA950Hu01****Polyclonal Antibody to Von Willebrand Factor Cleaving Protease (vWFPC)****Organism Species: Homo sapiens (Human)*****Instruction manual***

FOR IN VITRO USE AND RESEARCH USE ONLY

NOT FOR USE IN CLINICAL DIAGNOSTIC PROCEDURES

10th Edition (Revised in Jan, 2014)

**[ PRODUCT INFORMATION ]****Immunogen:** vWFPC, Human**Purification:** Affinity Chromatography.**Clonality:** Polyclonal**Applications:** WB, ICC, IHC-P, IHC-F, ELISA**Host:** Rabbit**Concentration:** 200µg/mL**Immunoglobulin Type:** IgG**UOM:** 100µg**[ IMMUNOGEN INFORMATION ]****Immunogen:** Recombinant vWFPC (Pro682~Cys859) with two N-terminal Tags, His-tag and T7-tag expressed in *E.coli*.**Accession No.:** RPA950Hu01**[ ANTIBODY SPECIFICITY ]**

The antibody is a rabbit polyclonal antibody raised against vWFPC. It has been selected for its ability to recognize vWFPC in immunohistochemical staining and western blotting.

**[ APPLICATIONS ]**

Western blotting: 1:50-400

Immunocytochemistry in formalin fixed cells: 1:50-500

Immunohistochemistry in formalin fixed frozen section: 1:50-500

Immunohistochemistry in paraffin section: 1:10-100

Enzyme-linked Immunosorbent Assay: 1:100-1:5000

Optimal working dilutions must be determined by end user.

## [ CONTENTS ]

**Form & Buffer:** Supplied as solution form in PBS, pH7.4, containing 0.02% NaN<sub>3</sub>, 50% glycerol.

## [ QUALITY CONTROL ]

**Content:** The quality control contains recombinant vWFCP (Pro682~Cys859) disposed in loading buffer.

**Usage:** 10uL per well when 3,3'-Diaminobenzidine(DAB) as the substrate.  
5uL per well when used in enhanced chemiluminescent (ECL).

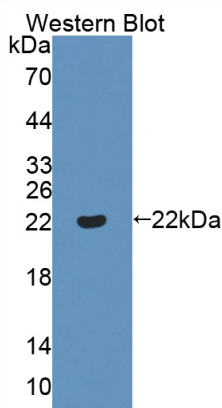
**Note:** The quality control is specifically manufactured as the positive control. Not used for other purposes.

**Loading Buffer:** 100mM Tris(pH8.8), 2% SDS, 200mM NaCl, 50% glycerol, BPB 0.01%, NaN<sub>3</sub> 0.02%.

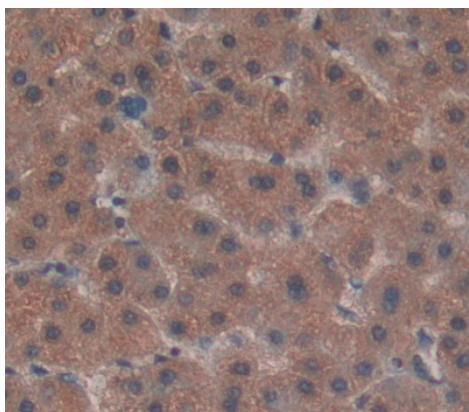
## [ STORAGE ]

Store at 4°C for frequent use. Stored at -20°C to in a manual defrost freezer for one year without detectable loss of activity. Avoid repeated freeze-thaw cycles.

## [ IMAGES ]



Used in Western Blot, Sample:  
Recombinant vWFCP, Human



Used in DAB staining on formalin fixed  
paraffin-embedded liver tissue