



CSI165Mu01

Primary Mouse Peripheral Blood Mononuclear Cells (PBMC)

Organism Species: *Mus musculus* (Mouse)

*Instruction manual*

FOR RESEARCH USE ONLY

NOT FOR USE IN CLINICAL DIAGNOSTIC PROCEDURES

1st Edition (Revised in Jun, 2023)

## [ DESCRIPTION ]

**Cell Type:** Mononuclear cell

**Synonyms:** PBMC

**Species:** *Mus musculus* (Mouse)

**Tissue Source:** Peripheral blood

**Size:**  $>5 \times 10^5$  cell/vial

## [ PROPERTIES ]

**Cell activity:**  $>95\%$  (Viability by Trypan Blue Exclusion).

**Formulation:** Frozen 1 mL (90%FBS+10% DMSO).

**Biosafety:** Negative for HIV-1, HBV, HCV, mycoplasma, bacteria, yeast and fungi.

**Applications:** For research use only. It is not approved for human or animal use, or for application in clinical diagnostic procedures.

**Growth Properties:** Suspension

## [ CONTENTS ]

**Form & Buffer:** Supplied as solution form in frozen stock solution, containing 90% FBS+10% DMSO.

## [ USAGE ]

Upon receiving the cells in a T-25 flask at room temperature, immediately transfer the cells to 37°C, 5% incubator; the cells in vials, directly and immediately transfer the cells from dry ice to liquid nitrogen.

### **Culture conditions:**

RPMI-1640+10%FBS+1%Penicillin-Streptomycin Solution+1% mononuclear cell growth supplement

Temperature: 37°C

Condition: 95% air, 5% carbon dioxide

### **Cell recovery:**

After receiving the cells, shake at 37°C in a water bath until completely dissolved, transfer to a 15 ml centrifuge tube, add 3-5 times complete culture solution, 1000 rpm for 5 min, discard the supernatant, and place in a T25 flask for culture.

### **Cell culture:**

The culture cycle of Mouse Peripheral Blood Mononuclear Cell was limited in *vitro*. Further cultivation of PBMC is guaranteed under the conditions provided by us. However, PBMC is not recommended for



expansion or long-term culture because cells do not proliferate in culture.

**[ Shipping ]**

Dry ice.

**[ STORAGE ]**

Upon receiving, directly and immediately transfer the cells from dry ice to liquid nitrogen and keep the cells in liquid nitrogen until they are needed for experiments.

**[ IMPORTANTNOTE ]**

1. PBMC is not recommended for expanding or long-term cultures because of its lack of proliferative capacity.
2. Experiments should be well organized before thawing PBMC. It is recommended that PBMC are used for experiments as quickly as possible after thawing the cells. Cells are not intended for long-term culture.
3. The cell is for research use only. We will not be responsible for any issue if the cell was used in clinical diagnostic or any other procedures.

**[ Figure ]**

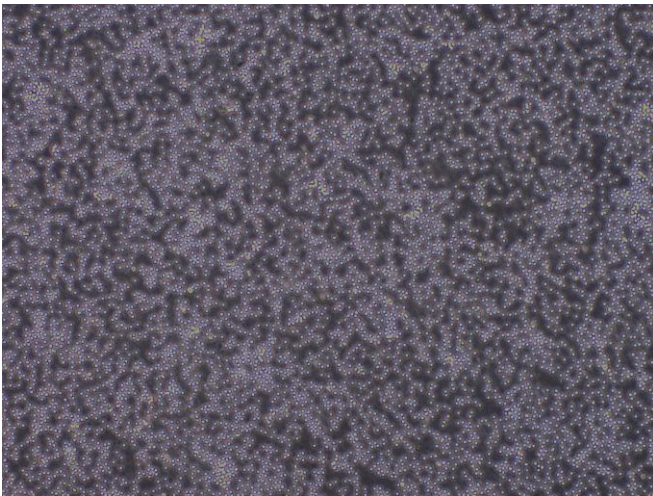


Figure 1

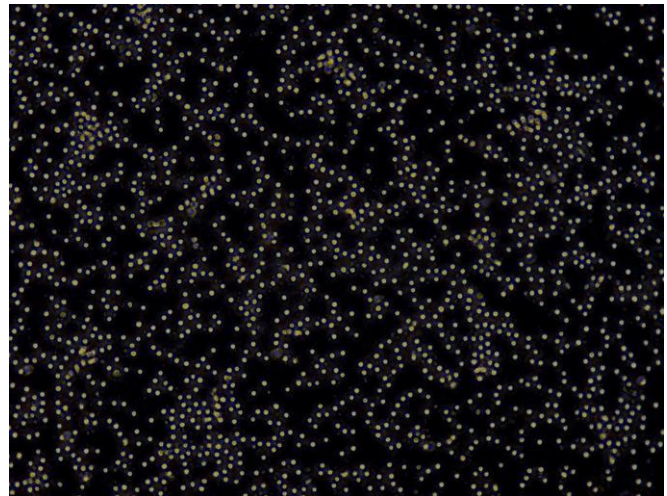


Figure 2

Figure 1 Morphology of Mouse PBMC (Optical microscope,×100)

Figure 2 Morphology of Mouse PBMC (Optical microscope,×200)