

RPP002Hu01 10µg

Recombinant A Disintegrin And Metalloproteinase With Thrombospondin 16 (ADAMTS16)

Organism Species: *Homo sapiens (Human)*

Instruction manual

FOR RESEARCH USE ONLY

NOT FOR USE IN CLINICAL DIAGNOSTIC PROCEDURES

12th Edition (Revised in Aug, 2016)

[PROPERTIES]

Source: Prokaryotic expression

Host: *E.coli*

Residues: Leu290~Pro641

Tags: N-terminal His Tag

Subcellular Location: Secreted, Extracellular matrix

Purity: > 95%

Traits: Freeze-dried powder

Buffer formulation: PBS, pH7.4, containing 0.01% SKL, 5% Trehalose.

Original Concentration: 450µg/mL

Applications: Positive Control; Immunogen; SDS-PAGE; WB.

(May be suitable for use in other assays to be determined by the end user.)

Predicted isoelectric point: 8.2

Predicted Molecular Mass: 42.6kDa

Accurate Molecular Mass: 43kDa as determined by SDS-PAGE reducing conditions.

[USAGE]

Reconstitute in 10mM PBS (pH7.4) to a concentration of 0.1-1.0 mg/mL. Do not vortex.

[STORAGE AND STABILITY]

Storage: Avoid repeated freeze/thaw cycles.

Store at 2-8°C for one month.

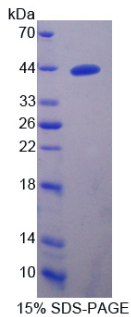
Aliquot and store at -80°C for 12 months.

Stability Test: The thermal stability is described by the loss rate. The loss rate was determined by accelerated thermal degradation test, that is, incubate the protein at 37°C for 48h, and no obvious degradation and precipitation were observed. The loss rate is less than 5% within the expiration date under appropriate storage condition.

[SEQUENCE]

L NVETLVVVDK
KMMQNHGHEN ITTYVLTILN MVSALFKDGT IGGNINIAIV GLILLEDEQP
GLVISHHADH TLSSFCQWQS GLMGKDGTRH DHAILLTGLD ICSWKNEPCD
TLGFAPISGM CSKYRSTIN EDTGLGLAFT IAHESGHNFG MIHDGEGNMC
KKSEGNIMSP TLAGRNGVFS WSPCSRQYLH KFLSTAQAIC LADQPKPVKE
YKYPEKLPGE LYDANTQCKW QFGEKAKLCM LDFKKDICKA LWCHRIGRKC
ETKFMPAEAG TICGHDMWCR GGQCVKYGDE GPKPTHGHWS DWSSWSPCSR
TCGGGVSHRS RLCTNPKPSH GGFCEGSTR TLKLCNSQKC P

[IDENTIFICATION]



[IMPORTANT NOTE]

The kit is designed for research use only, we will not be responsible for any issue if the kit was used in clinical diagnostic or any other procedures.