

RPN899Hu01 50µg
Recombinant A Disintegrin And Metalloproteinase
With Thrombospondin 19 (ADAMTS19)
Organism Species: Homo sapiens (Human)
Instruction manual

FOR IN VITRO USE AND RESEARCH USE ONLY
NOT FOR USE IN CLINICAL DIAGNOSTIC PROCEDURES

12th Edition (Revised in Aug, 2016)

[**PROPERTIES**]

Source: Prokaryotic expression.

Host: *E. coli*

Residues: Tyr325~Pro686

Tags: N-terminal His-Tag

Tissue Specificity: Lung.

Subcellular Location: Secreted, extracellular space, extracellular matrix.

Purity: >95%

Traits: Freeze-dried powder

Buffer formulation: 100mM NaHCO₃, 500mM NaCl, pH8.3, containing 1mM EDTA, 1mM DTT, 0.01% sarcosyl, 5%Trehalose and Proclin300.

Original Concentration: 200ug/mL

Applications: SDS-PAGE; WB; ELISA; IP; CoIP; Purification; Amine Reactive Labeling.

(May be suitable for use in other assays to be determined by the end user.)

Predicted isoelectric point: 5.8

Predicted Molecular Mass: 44.2kDa

Accurate Molecular Mass: 44kDa as determined by SDS-PAGE reducing conditions.

[**USAGE**]

Reconstitute in 100mM NaHCO₃, 500mM NaCl (pH8.3) to a concentration of 0.1-1.0 mg/mL. Do not vortex.

[**STORAGE AND STABILITY**]

Storage: Avoid repeated freeze/thaw cycles.

Store at 2-8°C for one month.

Aliquot and store at -80°C for 12 months.

Stability Test: The thermal stability is described by the loss rate. The loss rate was determined by accelerated thermal degradation test, that is, incubate the protein at 37°C for 48h, and no obvious degradation and precipitation were observed. The loss rate is less than 5% within the expiration date under appropriate storage condition.

[SEQUENCE]

```
YNIETV VVADPAMVSY HGADAARRFI
LTILNMVFNL FQHKSLSVQV NLRVIKLILL HETPPELYIG HHGEKMLESF
CKWQHEEFGK KNDIHLEMST NWGEDMTSVD AAILITRKDF CVHKDEPCDT
VGIAYLSGMC SEKRKCIIAE DNGLNLAFTI AHEMGNMGI NHDNDHPSCA
DGLHIMSGEW IKGQNLGDVS WSRCSEKEDLE RFLRSKASNC LLQTNPQSVN
SVMVPSKLPG MTYTADEQCQ ILFGPLASFC QEMQHVICTG LWCKVEGEKE
CRTKLDPPMD GTDCDLGKWC KAGECTSRTS APEHLAGESW LWSPCSRTCS
AGISSRERKC PGLDSEARDC NGPRKQYRIC ENPPCP
```

[IDENTIFICATION]

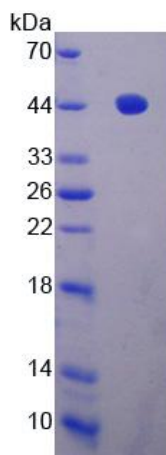


Figure 1. SDS-PAGE