

RPG315Mu01 100µg

Recombinant ADP Ribosyltransferase 1 (ART1)

Organism Species: *Mus musculus* (Mouse)

Instruction manual

FOR RESEARCH USE ONLY

NOT FOR USE IN CLINICAL DIAGNOSTIC PROCEDURES

13th Edition (Revised in Aug, 2023)

[PROPERTIES]

Source: Prokaryotic expression

Host: *E.coli*

Residues: Gln23~Cys325

Tags: N-terminal His Tag

Subcellular Location: Membrane

Purity: > 90%

Traits: Freeze-dried powder

Buffer formulation: PBS, pH7.4, containing 0.01% SKL, 5% Trehalose.

Original Concentration: 100µg/mL

Applications: Positive Control; Immunogen; SDS-PAGE; WB.

(May be suitable for use in other assays to be determined by the end user.)

Predicted isoelectric point: 8.2

Predicted Molecular Mass: 37.3kDa

Accurate Molecular Mass: 37kDa as determined by SDS-PAGE reducing conditions.

[USAGE]

Reconstitute in ddH₂O to a concentration of 0.1-1.0 mg/mL. Do not vortex.

[STORAGE AND STABILITY]

Storage: Avoid repeated freeze/thaw cycles.

Store at 2-8°C for one month.

Aliquot and store at -80°C for 12 months.

Stability Test: The thermal stability is described by the loss rate. The loss rate was determined by accelerated thermal degradation test, that is, incubate the protein at 37°C for 48h, and no obvious degradation and precipitation were observed. The loss rate is less than 5% within the expiration date under appropriate storage condition.

[SEQUENCE]

		QSYSISQL	DIFSQETPLD	MAPASFDDQY
AGCLADMTAA	LPDLNHSEFQ	ANKVYADGWA	QANNQWQERR	AWGSVWGS LP
PSPPGFRDEH	GVALLAYTAN	SPLHKEFNAA	VREAGRSRAH	YLHHFSFKTL
HFLLTEALQL	LSHRSRGCQ	QVYRGVHGLR	FRPAGPGATV	RLGGFASASL
KNVAAQQFGE	DTFFGIWTCL	GAPIRGYSFF	PEEEEEVLIPP	FETFQVINTS
RPTQGPARIY	LRLGKRSTY	NCEYIKEKKC	RSGPCWL GSS	APGSISASCS
LLLLLLFLVL	SALPENPGLQ	QLTRC		

[IDENTIFICATION]

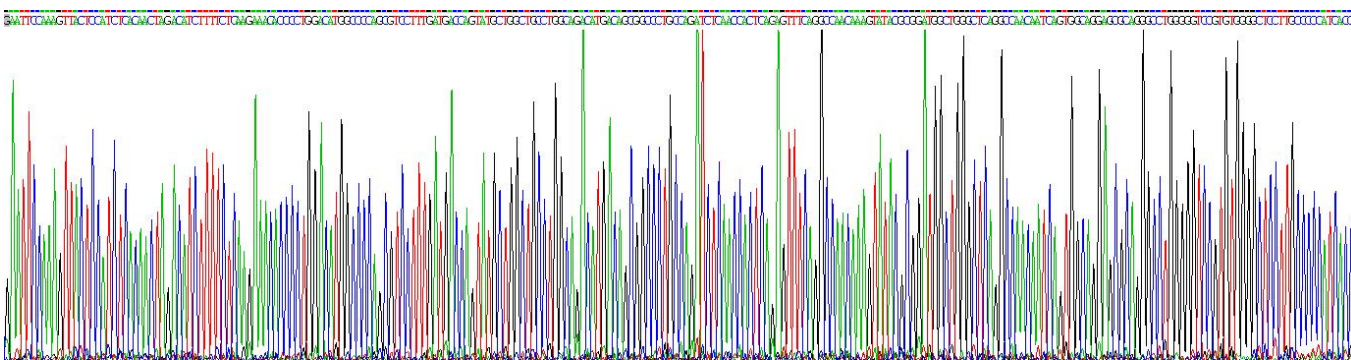


Figure . Gene Sequencing (extract)



Figure. SDS-PAGE

[IMPORTANT NOTE]

The kit is designed for research use only, we will not be responsible for any issue if the kit was used in clinical diagnostic or any other procedures.