

**RPG302Hu01 50µg**

**Recombinant Absent In Melanoma 2 (AIM2)**

**Organism Species: *Homo sapiens* (Human)**

***Instruction manual***

FOR RESEARCH USE ONLY

NOT FOR USE IN CLINICAL DIAGNOSTIC PROCEDURES

---

13th Edition (Revised in Aug, 2023)

**[ PROPERTIES ]**

**Source:** Prokaryotic expression

**Host:** *E.coli*

**Residues:** Met1~Thr343

**Tags:** N-terminal His Tag

**Subcellular Location:** Nucleus, Cytoplasm

**Purity:** > 80%

**Traits:** Freeze-dried powder

**Buffer formulation:** PBS, pH7.4, containing 0.01% SKL, 5% Trehalose.

**Original Concentration:** 450µg/mL

**Applications:** Positive Control; Immunogen; SDS-PAGE; WB.

(May be suitable for use in other assays to be determined by the end user.)

**Predicted isoelectric point:** 9.8

**Predicted Molecular Mass:** 43.7kDa

**Accurate Molecular Mass:** 44kDa as determined by SDS-PAGE reducing conditions.

**[ USAGE ]**

Reconstitute in 10mM PBS (pH7.4) to a concentration of 0.1-1.0 mg/mL. Do not vortex.

**[ STORAGE AND STABILITY ]**

**Storage:** Avoid repeated freeze/thaw cycles.

Store at 2-8°C for one month.

Aliquot and store at -80°C for 12 months.

**Stability Test:** The thermal stability is described by the loss rate. The loss rate was determined by accelerated thermal degradation test, that is, incubate the protein at 37°C for 48h, and no obvious degradation and precipitation were observed. The loss rate is less than 5% within the expiration date under appropriate storage condition.

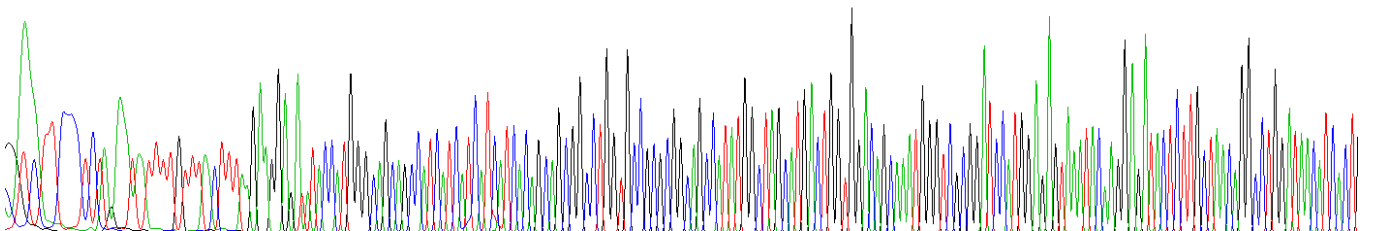
**[ SEQUENCE ]**

```

MESKYKEILL LTGLDNITDE ELDRFKFFLS DEFNIATGKL HTANRIQVAT
LMIQNAGAVS AVMTKIRIFQ KLNMYLLAKR LQEEKEKVDK QYKSVTKPKP
LSQAEMSPAA SAAIRNDVAK QRAAPKVSPH VKPEQKQMVV QQESIREGFQ
KRCLPVMVLK AKKPFTFETQ EGKQEMFHAT VATEKEFFFV KVFNTLLKDK
FIPKRIIIIA RYYRHSGFLE VNSASRVLDA ESDQKVNPL NIIRKAGETP
KINTLQTQPL GTIVNGLFVV QKVTEKKKNI LFDLSDNTGK MEVLGVRNED
TMKCKEGDKV RLTFFTLSKN GEKLQLTSGV HSTIKVIKAK KKT
  
```

**[ IDENTIFICATION ]**

CGAC TT CCCC TC TAGAATAT TTT GTT TACTTT TAGAGGGAGATACCAATGGGCGAGGOCATCATCATCATGACAGGOGGOCCTGGTGGCGGGGCGAGCCATATGGCTAGCATGACTGGTGGACAGCAAAATGGGTGGGGATCATGGAGAGTAATAACAAGGAGATACCTTGTCTAACAGGOCCTGGATAACATCACTC



**Figure . Gene Sequencing (extract)**

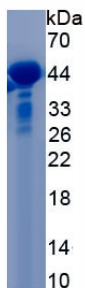


Figure. SDS-PAGE

**[ IMPORTANT NOTE ]**

The kit is designed for research use only, we will not be responsible for any issue if the kit was used in clinical diagnostic or any other procedures.