

**RPB447Bo01 100µg**

**Recombinant Acetylcholinesterase (ACHE)**

**Organism Species: *Bos taurus*; Bovine (Cattle)**

***Instruction manual***

FOR RESEARCH USE ONLY

NOT FOR USE IN CLINICAL DIAGNOSTIC PROCEDURES

---

13th Edition (Revised in Aug, 2023)

**[ PROPERTIES ]**

**Source:** Prokaryotic expression

**Host:** *E.coli*

**Residues:** Glu31~Leu613

**Tags:** N-terminal His Tag

**Subcellular Location:** Membrane, Secreted, Endosome

**Purity:** > 85%

**Traits:** Freeze-dried powder

**Buffer formulation:** PBS, pH7.4, containing 0.01% SKL, 5% Trehalose .

**Original Concentration:** 200µg/mL

**Applications:** Positive Control; Immunogen; SDS-PAGE; WB.

(May be suitable for use in other assays to be determined by the end user.)

**Predicted isoelectric point:** 6.0

**Predicted Molecular Mass:** 68.2kDa

**Accurate Molecular Mass:** 68kDa as determined by SDS-PAGE reducing conditions.

**[ USAGE ]**

Reconstitute in 10mM PBS (pH7.4) to a concentration of 0.1-1.0 mg/mL. Do not vortex.

**[ STORAGE AND STABILITY ]**

**Storage:** Avoid repeated freeze/thaw cycles.

Store at 2-8°C for one month.

Aliquot and store at -80°C for 12 months.

**Stability Test:** The thermal stability is described by the loss rate. The loss rate was determined by accelerated thermal degradation test, that is, incubate the protein at 37°C for 48h, and no obvious degradation and precipitation were observed. The loss rate is less than 5% within the expiration date under appropriate storage condition.

**[ SEQUENCE ]**

```

EGPEDPELLV MVRGGRLRGL RLMAPRGPVS AFLGIPFAEP PVGPRRFLPP EPKRPWPGVL
NATAFQSVCY QYVDTLYPGF EGTEMWNPNR ELSEDCLYLN VWTPYPRPSS PTPVLVWIYG
GGFYSGASSL DVYDGRFLTQ AEGTVLVSMN YRVGAFGFLA LFGSREAPGN VGLLDQRLAL
QWVQENVAAF GGDPTSVTLF GESAGAASVG MHLLSPPSRG LFHRAVLQSG APNGPWATVG
VGEARRRATL LARLVGCPPG GAGGNDTELV ACLRARPAQD LVDHEWRVLP QESVFRFSFV
PVVDGDFLSD TPEALINAGD FHGLQVLVGV VKDEGSYFLV YGAPGFSKDN ESLISRAQFL
AGVRVGVFQA SDLAAEAVVL HYTDWLHPED PARLREALSD VVGDNVWVCP VAQLAGRLAA
QGARVYAYIF EHRASTLSWP LWMGVPHGYE IEFIFGLPLE PSLNYTIEER TFAQRLMRYW
ANFARTGDPN DPRDPKAPQW PPYTAGAQQY VSLNLRPLEV RRGLRAQACA FWNRFLLPKLL
SATDTLDEAE RQWKAEFHRW SSYMVHWKNQ FDHYSKQDRC SDL

```

**[ IDENTIFICATION ]**

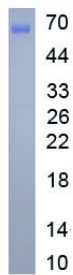


Figure. SDS-PAGE

**[ IMPORTANT NOTE ]**

The kit is designed for research use only, we will not be responsible for any issue if the kit was used in clinical diagnostic or any other procedures.