

RPB391Hu01 50µg
Recombinant Actin Gamma 1 (ACTg1)
Organism Species: Homo sapiens (Human)
Instruction manual

FOR IN VITRO USE AND RESEARCH USE ONLY
NOT FOR USE IN CLINICAL DIAGNOSTIC PROCEDURES

12th Edition (Revised in Aug, 2016)

[**PROPERTIES**]

Source: Prokaryotic expression.

Host: *E. coli*

Residues: Met1~Phe375

Tags: N-terminal His-Tag

Tissue Specificity: Lung Cancer, Ovary Cancer, Skin.

Subcellular Location: Cytoplasm, cytoskeleton.

Purity: >95%

Traits: Freeze-dried powder

Buffer formulation: PBS, pH7.4, containing 1mM DTT, 5% trehalose, 0.01% sarcosyl and Proclin300.

Original Concentration: 200ug/mL

Applications: SDS-PAGE; WB; ELISA; IP; CoIP; Purification; Amine Reactive Labeling.

(May be suitable for use in other assays to be determined by the end user.)

Predicted isoelectric point: 5.6

Predicted Molecular Mass: 43.0kDa

Accurate Molecular Mass: 43kDa as determined by SDS-PAGE reducing conditions.

[**USAGE**]

Reconstitute in PBS (pH7.4) to a concentration of 0.1-1.0 mg/mL. Do not vortex.

[**STORAGE AND STABILITY**]

Storage: Avoid repeated freeze/thaw cycles.

Store at 2-8°C for one month.

Aliquot and store at -80°C for 12 months.

Stability Test: The thermal stability is described by the loss rate. The loss rate was determined by accelerated thermal degradation test, that is, incubate the protein at 37°C for 48h, and no obvious degradation and precipitation were observed. The loss rate is less than 5% within the expiration date under appropriate storage condition.

[SEQUENCE]

```
MEEEIAALVI DNGSGMCKAG FAGDDAPRAV FPSIVGRPRH QGVMVGMGQK  
DSYVGDEAQS KRGILTCLKYP IEHGIVTNWD DMEKIWHHTF YNELRVAPEE  
HPVLLTEAPL NPKANREKMT QIMFETFNTP AMYVAIQAVL SLYASGRRTG  
IVMDSGDGVT HTVPIYEGYA LPHAILRLDL AGRDLTDYLM KILTERGYSF  
TTTAEREIVR DIKEKLCYVA LDFEQEMATA ASSSSLEKSY ELPDGQVITI  
GNERFRCPEA LFQPSFLGME SCGIHETTFN SIMKCDVDIR KDLYANTVLS  
GGTTMYPGIA DRMQKEITAL APSTMKIKII APPERKYSVW IGGSILASLS  
TFQQMWISKQ EYDESGPSIV HRKCF
```

[IDENTIFICATION]

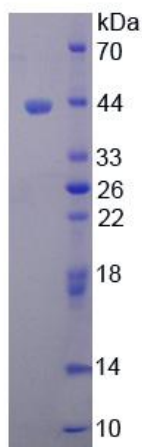


Figure 1. SDS-PAGE