

**RPA002Ca01 100ug**  
**Recombinant Activated Leukocyte Cell Adhesion Molecule (ALCAM)**  
**Organism Species: *Canis familiaris*; Canine (Dog)**  
***Instruction manual***

FOR RESEARCH USE ONLY  
NOT FOR USE IN CLINICAL DIAGNOSTIC PROCEDURES

---

13th Edition (Revised in Aug, 2023)

**[ PROPERTIES ]**

**Source:** Prokaryotic expression

**Host:** *E.coli*

**Residues:** Cys208-His476 (Accession # O46634)

**Tags:** N-terminal His Tag

**Subcellular Location:** n/a

**Purity:** > 95%

**Traits:** Freeze-dried powder

**Buffer formulation:** pH7.4, containing 0.01% SKL, 5% Trehalose

**Original Concentration:** 200µg/mL

**Applications:** Positive Control; Immunogen; SDS-PAGE; WB.

(May be suitable for use in other assays to be determined by the end user.)

**Predicted isoelectric point:**

**Predicted Molecular Mass:** 31.2kDa

**Accurate Molecular Mass:** 31kDa as determined by SDS-PAGE reducing conditions.

**[ USAGE ]****[ STORAGE AND STABILITY ]**

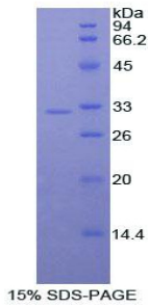
**Storage:** Avoid repeated freeze/thaw cycles.

Store at 2-8°C for one month.

Aliquot and store at -80°C for 12 months.

**Stability Test:** The thermal stability is described by the loss rate. The loss rate was determined by accelerated thermal degradation test, that is, incubate the protein at 37°C for 48h, and no obvious degradation and precipitation were observed. The loss rate is less than 5% within the expiration date under appropriate storage condition.

**[ SEQUENCE ]**

**[ IDENTIFICATION ]****[ IMPORTANT NOTE ]**

The kit is designed for research use only, we will not be responsible for any issue if the kit was used in clinical diagnostic or any other procedures.