

**RPA738Hu01 200µg**

**Recombinant Activated Protein C (APC)**

**Organism Species: *Homo sapiens (Human)***

***Instruction manual***

**FOR RESEARCH USE ONLY**

**NOT FOR USE IN CLINICAL DIAGNOSTIC PROCEDURES**

---

12th Edition (Revised in Aug, 2016)

## **[ PROPERTIES ]**

**Source:** Prokaryotic expression

**Host:** *E.coli*

**Residues:** Ser53~Ile445

**Tags:** N-terminal His Tag

**Subcellular Location:** Secreted

**Purity:** > 90%

**Traits:** Freeze-dried powder

**Buffer formulation:** 20mM Tris, 150mM NaCl, pH8.0, containing 0.01% skl, 5%Trehalose.

**Original Concentration:** 200µg/mL

**Applications:** Positive Control; Immunogen; SDS-PAGE; WB.

(May be suitable for use in other assays to be determined by the end user.)

**Predicted isoelectric point:** 5.7

**Predicted Molecular Mass:** 45.5kDa

**Accurate Molecular Mass:** 46kDa as determined by SDS-PAGE reducing conditions.

## **[ USAGE ]**

Reconstitute in 20mM Tris, 150mM NaCl (pH8.0) to a concentration of 0.1-1.0 mg/mL. Do not vortex.

## **[ STORAGE AND STABILITY ]**

**Storage:** Avoid repeated freeze/thaw cycles.

Store at 2-8°C for one month.

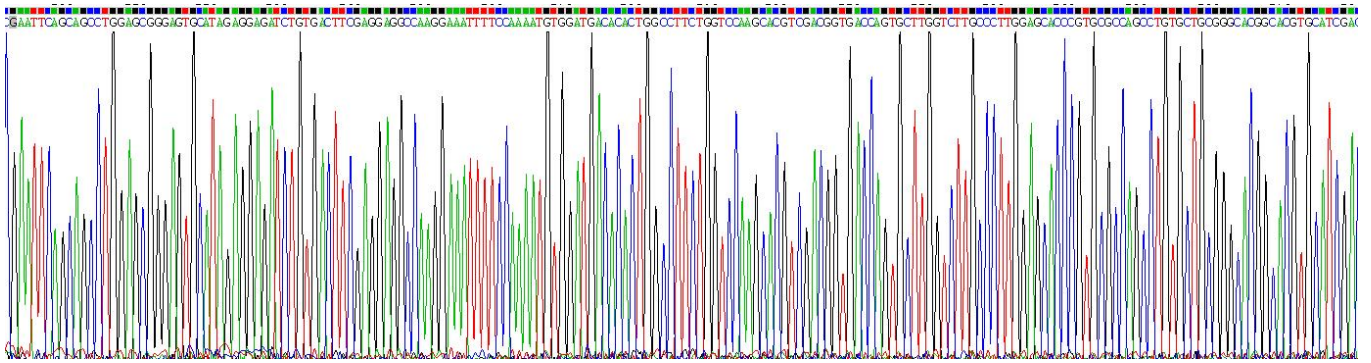
Aliquot and store at -80°C for 12 months.

**Stability Test:** The thermal stability is described by the loss rate. The loss rate was determined by accelerated thermal degradation test, that is, incubate the protein at 37°C for 48h, and no obvious degradation and precipitation were observed. The loss rate is less than 5% within the expiration date under appropriate storage condition.

## **[ SEQUENCE ]**

SSLERECI	EEICDFEEAK	EIFQNVDDTL	AFWSKHVDGD	QCLVLPLEHP
CASLCCGHGT	CIDGIGSFSC	DCRSGWEGRF	CQREVSFLNC	SLDNNGGCTHY
CLEEVGWRR	SCAPGYKLG	DLLQCHPAVK	FPCGRPWKRM	EKKRSHLKR
TEDQEDQVDP	RLIDGKMTRR	GDSPWQVLL	DSKKKLACGA	VLIHPSWVLT
AAHCMDESKK	LLVRLGEYDL	RRWEKWELDL	DIKEVFVHPN	YSKSTTDNDI
ALLHLAQPAT	LSQTIVPICL	PDSGLAEREL	NQAGQETLVT	GWGYHSSREK
EAKRNRTFVL	NFIKIPVVP	NECSEVMSNM	VSENLMLCAGI	LGDRQDACEG
DSGGPMVASF	HGTWFLVGLV	SWGEGCGLLH	NYGVYTKVSR	YLDWI

**[ IDENTIFICATION ]**



### Figure . Gene Sequencing (extract)

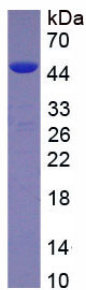


Figure. SDS-PAGE

**[ IMPORTANT NOTE ]**

The kit is designed for research use only, we will not be responsible for any issue if the kit was used in clinical diagnostic or any other procedures.