

**RPC282Hu01 50µg**

**Recombinant Adhesion Regulating Molecule 1 (ADRM1)**

**Organism Species: *Homo sapiens (Human)***

***Instruction manual***

FOR RESEARCH USE ONLY

NOT FOR USE IN CLINICAL DIAGNOSTIC PROCEDURES

---

12th Edition (Revised in Aug, 2016)

## [ **PROPERTIES** ]

**Source:** Prokaryotic expression

**Host:** *E.coli*

**Residues:** Thr2~Asp407

**Tags:** N-terminal His Tag

**Subcellular Location:** Cytoplasm

**Purity:** > 90%

**Traits:** Freeze-dried powder

**Buffer formulation:** 20mM Tris, 150mM NaCl, pH8.0, containing 0.01% skl, 5%Trehalose.

**Original Concentration:** 200µg/mL

**Applications:** Positive Control; Immunogen; SDS-PAGE; WB.

(May be suitable for use in other assays to be determined by the end user.)

**Predicted isoelectric point:** 5.6

**Predicted Molecular Mass:** 43.4kDa

**Accurate Molecular Mass:** 46kDa as determined by SDS-PAGE reducing conditions.

## [ **USAGE** ]

Reconstitute in 20mM Tris, 150mM NaCl (pH8.0) to a concentration of 0.1-1.0 mg/mL. Do not vortex.

## [ **STORAGE AND STABILITY** ]

**Storage:** Avoid repeated freeze/thaw cycles.

Store at 2-8°C for one month.

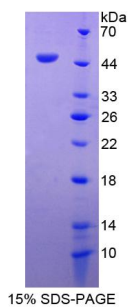
Aliquot and store at -80°C for 12 months.

**Stability Test:** The thermal stability is described by the loss rate. The loss rate was determined by accelerated thermal degradation test, that is, incubate the protein at 37°C for 48h, and no obvious degradation and precipitation were observed. The loss rate is less than 5% within the expiration date under appropriate storage condition.

## [ **SEQUENCE** ]

TTSGALFPS LVPGSRGASN KYLVEFRAGK MSLKGTTVTP DKRKGLVYIQ  
QTDDSLIHFC WKDRTSGNVE DDLIIFPDDC EFKRVPQCPS GRVYVLKFKA  
GSKRLFFWMQ EPKTDQDEEH CRKVNEYLNN PPMPGALGAS GSSGHELSAL  
GGEGGLQSLI GNMSHSQLMQ LIGPAGLGGL GGLGALTGPG LASLLGSSGP  
PGSSSSSSSR SQSAAVTPSS TTSSTRATPA PSAPAAASAT SPSAPSSGN  
GASTAASPTQ PIQLSDLQSI LATMNVPA GP AGGQQVDLAS VLTPEIMAPI  
LANADVQERL LPYLPSGESL PQTAEIQNT LTSPQFQQAL GMFSAALASG  
QLGPLMCQFG LPAAVEAAN KGDVEAFAKA MQNNAKPEQK EGDTKDKKDE  
EEDMSLD

**[ IDENTIFICATION ]**



**[ IMPORTANT NOTE ]**

The kit is designed for research use only, we will not be responsible for any issue if the kit was used in clinical diagnostic or any other procedures.