

RPA160Rb01 10µg

Recombinant Alpha 2-Antiplasmin (a2PI)

Organism Species: *Oryctolagus cuniculus* (Rabbit)

Instruction manual

FOR RESEARCH USE ONLY

NOT FOR USE IN CLINICAL DIAGNOSTIC PROCEDURES

12th Edition (Revised in Aug, 2016)

[PROPERTIES]

Source: Prokaryotic expression

Host: *E.coli*

Residues: Met28~Lys491

Tags: N-terminal His Tag

Subcellular Location: n/a

Purity: > 95%

Traits: Freeze-dried powder

Buffer formulation: 20mM Tris, 150mM NaCl, pH8.0, containing 0.01% SKL, 5% Trehalose.

Original Concentration: 200µg/mL

Applications: Positive Control; Immunogen; SDS-PAGE; WB.

(May be suitable for use in other assays to be determined by the end user.)

Predicted isoelectric point: 5.8

Predicted Molecular Mass: 57.7kDa

Accurate Molecular Mass: 60kDa as determined by SDS-PAGE reducing conditions.

[USAGE]

Reconstitute in 20mM Tris, 150mM NaCl (pH8.0) to a concentration of 0.1-1.0 mg/mL. Do not vortex.

[STORAGE AND STABILITY]

Storage: Avoid repeated freeze/thaw cycles.

Store at 2-8°C for one month.

Aliquot and store at -80°C for 12 months.

Stability Test: The thermal stability is described by the loss rate. The loss rate was determined by accelerated thermal degradation test, that is, incubate the protein at 37°C for 48h, and no obvious degradation and precipitation were observed. The loss rate is less than 5% within the expiration date under appropriate storage condition.

[SEQUENCE]

```

MEP VGRQLTSGQS QEKLPLALL
KLVNQELHGQ TALKKSPGDC RETPTPEQTR RLAQAMMAFT TDLFSLVVQA
STSPNLVLSL LSVALALSHL ALGAQNHTLQ RLQQVLHADS GPCLPHLLSH
LCRNLGPGAF RLAARMYLQK GFPIKEDFLK LSEQLFGAKP VSLTGRQEED
LVNINQWVKE ATEGKIEDFL SELPDSTVLL LLNAIHFQGF WRSKFDPSLT
QRDSFHLDEQ FTVPVDMMQA HKYPLRWFLQ EQPEIQVAQF PFKNNMSFV
LVPTNFEWNV SQVLSNLSWD ILHQPSLRER PTKVQLPKLL LKHQLDLVTT
LSQLGLQELF LAPDLRGISD EGLVSSVQH QSTLELNEAG VEAAAATSTA
MSRMSLSSFS VNRPFLFFIL EDTIDLPIFV GIVRNPNSA QPERKEQDS
PDHRDPSQPQ KSFPHGDKLF SPDLKLAPPS EEDYPQLSSP K

```

[IDENTIFICATION]

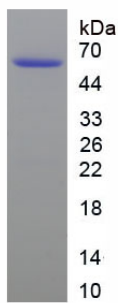


Figure. SDS-PAGE

[IMPORTANT NOTE]

The kit is designed for research use only, we will not be responsible for any issue if the kit was used in clinical diagnostic or any other procedures.