

RPA153Hu02 50µg

Recombinant Alpha-Fetoprotein (aFP)

Organism Species: *Homo sapiens (Human)*

Instruction manual

FOR RESEARCH USE ONLY

NOT FOR USE IN CLINICAL DIAGNOSTIC PROCEDURES

12th Edition (Revised in Aug, 2016)

[PROPERTIES]

Source: Prokaryotic expression

Host: *E.coli*

Residues: Ile31~Ser576

Tags: Two N-terminal Tags, His-tag and SUMO-tag

Subcellular Location: Secreted

Purity: > 90%

Traits: Freeze-dried powder

Buffer formulation: 20mM Tris, 150mM NaCl, pH8.0, containing 0.01% SKL, 5% Trehalose and Proclin300.

Original Concentration: 200µg/mL

Applications: Positive Control; Immunogen; SDS-PAGE; WB.

(May be suitable for use in other assays to be determined by the end user.)

Predicted isoelectric point: 5.5

Predicted Molecular Mass: 75.2kDa

Accurate Molecular Mass: 75kDa as determined by SDS-PAGE reducing conditions.

[USAGE]

Reconstitute in 20mM Tris, 150mM NaCl (pH8.0) to a concentration of 0.1-1.0 mg/mL. Do not vortex.

[STORAGE AND STABILITY]

Storage: Avoid repeated freeze/thaw cycles.

Store at 2-8°C for one month.

Aliquot and store at -80°C for 12 months.

Stability Test: The thermal stability is described by the loss rate. The loss rate was determined by accelerated thermal degradation test, that is, incubate the protein at 37°C for 48h, and no obvious degradation and precipitation were observed. The loss rate is less than 5% within the expiration date under appropriate storage condition.

[SEQUENCE]

			ILDSYQCTAE	ISLADLATIF
FAQFVQEATY	KEVSKMVKDA	LTAIEKPTGD	EQSSGCLENQ	LPAFLEELCH
EKEILEKYGH	SDCCSQSEEG	RHNCFLAHKK	PTPASIFLQ	VPEPVSCEA
YEEDRETFMN	KFIYEIARRH	PFLYAPTILL	WAARYDKIIP	SCCKAENAVE
CFQTKAATVT	KELRESSLLN	QHACAVMKNF	GTRTFQAITV	TKLSQKFTKV
NFTEIQKLVL	DVAHVHEHCC	RGDVLDCLOD	GEKIMSYICS	QQDTLSNKIT
ECCKLTTLER	GQCIIHAEND	EKPEGLSPNL	NRFLGDRDFN	QFSSGEKNIF
LASFVHEYSR	RHPQLAVSVI	LRVAKGYQEL	LEKCFQTENP	LECQDKGEEE
LQKYIQESQA	LAKRSCGLFQ	KLGEYYLQNA	FLVAYTKKAP	QLTSSELMAI
TRKMAATAAT	CCQLSEDKLL	ACGEGAADII	IGHLCIRHEM	TPVNPVGVC
CTSSYANRRP	CFSSLVDET	YVPPAFSDDK	FIFHKDLCQA	QGVALQTMKQ
EFLINLVKQK	PQITEEQLEA	VIADFS		

[IDENTIFICATION]

ILDSYQCTAEISLADLATIFFFAQFVQEATYKEVSKMVKDALTAIEKPTGDEQSSGCLENQLPAFLEELCHEKEILEKYGHSDCCSQSEEGRHNCF

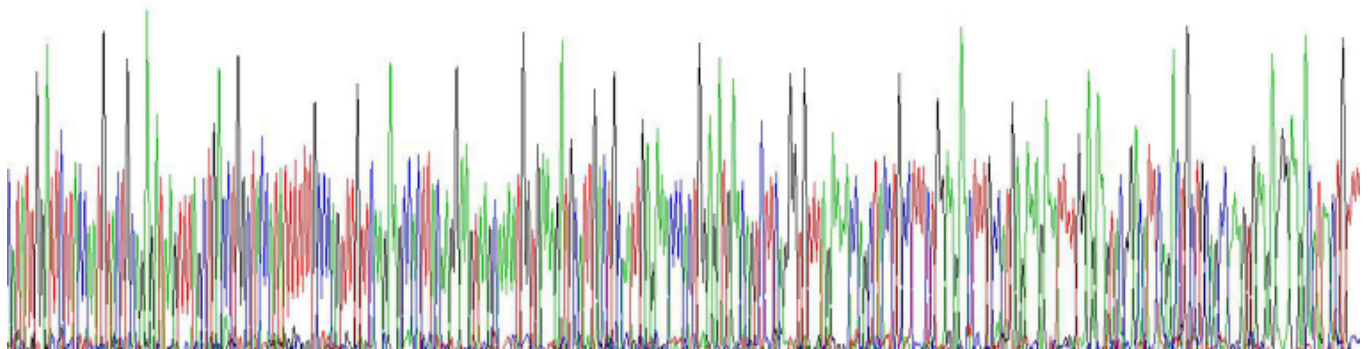


Figure. Gene Sequencing (Extract)

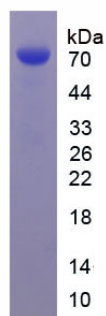


Figure. SDS-PAGE

[IMPORTANT NOTE]



The kit is designed for research use only, we will not be responsible for any issue if the kit was used in clinical diagnostic or any other procedures.