

**RPA310Hu01 1mg**

**Recombinant Apolipoprotein H (APOH)**

**Organism Species: *Homo sapiens (Human)***

***Instruction manual***

FOR RESEARCH USE ONLY

NOT FOR USE IN CLINICAL DIAGNOSTIC PROCEDURES

---

12th Edition (Revised in Aug, 2016)

**[ PROPERTIES ]**

**Source:** Prokaryotic expression

**Host:** *E.coli*

**Residues:** Thr22~Cys345

**Tags:** N-terminal His Tag

**Subcellular Location:** Secreted

**Purity:** > 97%

**Traits:** Freeze-dried powder

**Buffer formulation:** PBS, pH7.4, containing 0.01% SKL, 5% Trehalose.

**Original Concentration:** 300µg/mL

**Applications:** Positive Control; Immunogen; SDS-PAGE; WB.

(May be suitable for use in other assays to be determined by the end user.)

**Predicted isoelectric point:** 8.0

**Predicted Molecular Mass:** 37.3kDa

**Accurate Molecular Mass:** 37kDa as determined by SDS-PAGE reducing conditions.

**[ USAGE ]**

Reconstitute in 10mM PBS (pH7.4) to a concentration of 0.1-1.0 mg/mL. Do not vortex.

**[ STORAGE AND STABILITY ]**

**Storage:** Avoid repeated freeze/thaw cycles.

Store at 2-8°C for one month.

Aliquot and store at -80°C for 12 months.

**Stability Test:** The thermal stability is described by the loss rate. The loss rate was determined by accelerated thermal degradation test, that is, incubate the protein at 37°C for 48h, and no obvious degradation and precipitation were observed. The loss rate is less than 5% within the expiration date under appropriate storage condition.

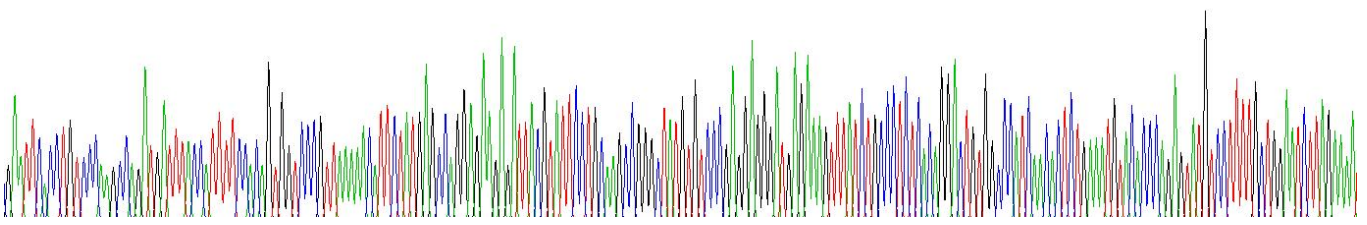
**[ SEQUENCE ]**

```

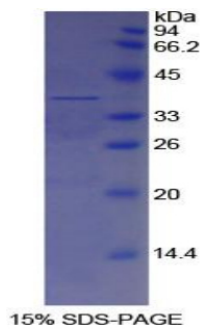
                TCPKPDDL P  FSTVPLKTF  YEPGEEITYS
CKPGYVSRGG MRKFICPLTG LWPINTLKCT PRVCPFAGIL ENGAVRYTTF
EYPNTISFSC NTGFYLNAGD SAKCTEEGKW SPELPVCAPI ICPPPSIPTF
ATLRVYKPSA GNNSLYRDTA VFECPLQHAM FGNDTITCTT HGNWTKLPEC
REVKCPFPSR PDNGFVNYP A KPTLYYKDKA TFGCHDGYSL DGPEEIECTK
LGNWSAMPSC KASCKVPVKK ATVVYQGERV KIQEKFKNGM LHGDKVSFFC
KNKEKKCSYT EDAQCIDGTI EVPKCFKEHS SLAFWKTDAS DVKPC
    
```

**[ IDENTIFICATION ]**

G A T T G A C C T G T G C C G A G C G A T G A T T A C C A T T T T C G C A G T G T C C G T T A A A A C A T T C T A T G A G C C G G A G A G A T T A G T A T T C T G A M G C C G G C T A T G T G T C C G A G C G G A T G A A A G T T A T C T G C C T C T C A C A G G A C T G T G G C C A T C A A C A C T C T G A A T G T A C C C A G A G T A T G C C T T T G C T G A T C T T A G A A T



**Figure . Gene Sequencing (extract)**



**[ IMPORTANT NOTE ]**

The kit is designed for research use only, we will not be responsible for any issue if the kit was used in clinical diagnostic or any other procedures.