

**RPD073Hu01 10µg**

**Recombinant Carbonic Anhydrase VI (CA6)**

**Organism Species: *Homo sapiens* (Human)**

***Instruction manual***

FOR RESEARCH USE ONLY

NOT FOR USE IN CLINICAL DIAGNOSTIC PROCEDURES

---

13th Edition (Revised in Aug, 2023)

## **[ PROPERTIES ]**

**Source:** Prokaryotic expression

**Host:** *E.coli*

**Residues:** Gln18~Asn308

**Tags:** N-terminal His and GST Tag

**Subcellular Location:** Secreted

**Purity:** > 90%

**Traits:** Freeze-dried powder

**Buffer formulation:** 20mM Tris, 150mM NaCl, pH8.0, containing 0.01% Sarcosyl, 5%Trehalose.

**Original Concentration:** 200µg/mL

**Applications:** Positive Control; Immunogen; SDS-PAGE; WB.

(May be suitable for use in other assays to be determined by the end user.)

**Predicted isoelectric point:** 6.4

**Predicted Molecular Mass:** 63.8kDa

**Accurate Molecular Mass:** 66kDa as determined by SDS-PAGE reducing conditions.

## **[ USAGE ]**

Reconstitute in 20mM Tris, 150mM NaCl (pH8.0) to a concentration of 0.1-1.0 mg/mL. Do not vortex.

## **[ STORAGE AND STABILITY ]**

**Storage:** Avoid repeated freeze/thaw cycles.

Store at 2-8°C for one month.

Aliquot and store at -80°C for 12 months.

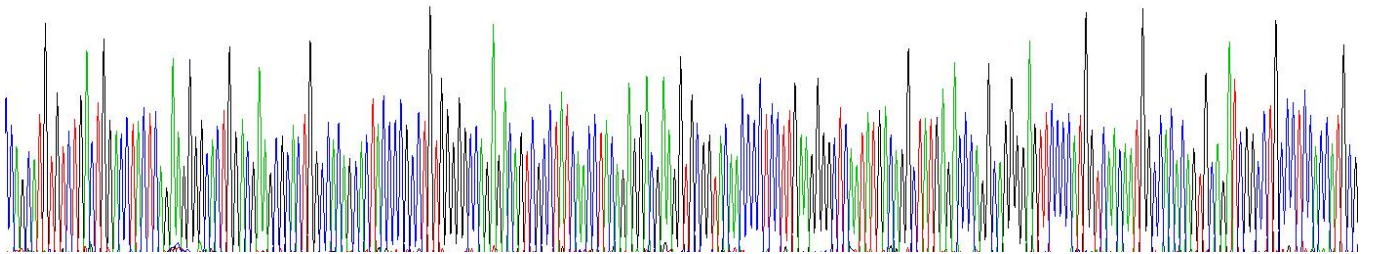
**Stability Test:** The thermal stability is described by the loss rate. The loss rate was determined by accelerated thermal degradation test, that is, incubate the protein at 37°C for 48h, and no obvious degradation and precipitation were observed. The loss rate is less than 5% within the expiration date under appropriate storage condition.

**[ SEQUENCE ]**

	QHV	SDWTYSEGL	DEAHWPQHYP	ACGGQRQSPI
NLQRTKVRYN	PSLKGLNMTG	YETQAGEFPM	VNNGHTVQIS	LPSTMRMTVA
DGTVYIAQQM	HFHWGGASSE	ISGSEHTVDG	IRHVIEIHIV	HYNSKYKSYD
IAQDAPDGLA	VLA AFVEVKN	YPENTYYSNF	ISHLANIKYP	GQRTTLTGLD
VQDMLPRNLQ	HYITYHGS LT	TPPCTENVHW	FVLAD FVKLS	RTQVWKLENS
LLDHRNKTIH	NDYRR TQPLN	HRVVESNF PN	QEYTLGSEFQ	FYLHKIEEIL
DYLRRALN				

**[ IDENTIFICATION ]**

D I G A T G T G T G C T G A C C T C A G A G A G G G C C T G G G A G A G G C T G G T G C G C C T A C C C C C C C T G T G G G G C G G A G T G C C T A T C A C C T A G C G G C G A G G T G G T C A G C C C C T C T T G A G G G G C C A T A T G C A G C C T A T G A C C C C C C G G T T C C C C T G T G C C A A T G A C T G C G A G T G C G T G C C C C T G C C T C C A T G C G  
 Q H V S D W T Y T S E G A L D E A H W P Q H Y P A C G G Q R Q S P I N L Q R T K V R Y N P S L K G L N M T G Y E T Q A G E F P M V N N G H T V Q I G I P S T H R



### Figure. Gene Sequencing (Extract)

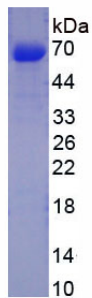


Figure. SDS-PAGE

**[ IMPORTANT NOTE ]**

The kit is designed for research use only, we will not be responsible for any issue if the kit was used in clinical diagnostic or any other procedures.