

RPC374Mu01 500µg

Recombinant Carboxylesterase 1 (CES1)

Organism Species: *Mus musculus* (Mouse)

Instruction manual

FOR RESEARCH USE ONLY

NOT FOR USE IN CLINICAL DIAGNOSTIC PROCEDURES

12th Edition (Revised in Aug, 2016)

[PROPERTIES]

Source: Prokaryotic expression

Host: *E.coli*

Residues: His19~Leu565

Tags: N-terminal His Tag

Subcellular Location: Secreted

Purity: > 95%

Traits: Freeze-dried powder

Buffer formulation: 20mM Tris, 150mM NaCl, pH8.0, containing 0.01% SKL, 5% Trehalose.

Original Concentration: 80µg/mL

Applications: Positive Control; Immunogen; SDS-PAGE; WB.

(May be suitable for use in other assays to be determined by the end user.)

Predicted isoelectric point: 5.9

Predicted Molecular Mass: 64.5kDa

Accurate Molecular Mass: 60kDa as determined by SDS-PAGE reducing conditions.

Phenomenon explanation:

The possible reasons that the actual band size differs from the predicted are as follows:

1. Splice variants: Alternative splicing may create different sized proteins from the same gene.
2. Relative charge: The composition of amino acids may affects the charge of the protein.
3. Post-translational modification: Phosphorylation, glycosylation, methylation etc.
4. Post-translation cleavage: Many proteins are synthesized as pro-proteins, and then cleaved to give the active form.
5. Polymerization of the target protein: Dimerization, multimerization etc.

[USAGE]

Reconstitute in ddH₂O to a concentration of 0-0.1 mg/mL. Do not vortex.

[STORAGE AND STABILITY]

Storage: Avoid repeated freeze/thaw cycles.

Store at 2-8°C for one month.

Aliquot and store at -80°C for 12 months.

Stability Test: The thermal stability is described by the loss rate. The loss rate was determined by accelerated thermal degradation test, that is, incubate the protein at 37°C for 48h, and no obvious degradation and precipitation were observed. The loss rate is less than 5% within the expiration date under appropriate storage condition.

[**SEQUENCE**]

```

      HP  SLPPVVHTVH  GKVLGKYVTL  EGFSQPVAVF
LGVPFAKPPL  GSLRFAPPEP  AEPWSFVKHT  TSYPPLCYQN  PEAALRLAEL
FTNQRKIIPH  KFSEDCLYLN  IYTPADLTQN  SRLPVMVWIH  GGGLVIDGAS
TYDGVPLAVH  ENVVVVVIQY  RLGIWGFST  EDEHSRGNWG  HLDQVAALHW
VQDNIANFGG  NPGSVTIFGE  SAGGESVSVL  VLSPLAKNLF  HRAIAQSSVI
FNPCLFGRAA  RPLAKKIAAL  AGCKTTTSAA  MVHCLRQKTE  DELLEVSLKM
KFGTVDFLGD  PRESYPFLPT  VIDGVLLPKA  PEEILAEKSF  NTPVPMVGIN
KHEFGWIIPM  FLDPLSERK  LDQKTAASIL  WQAYPILNIS  EKLIPAAIEK
YLGGTEDPAT  MTDLFLDLIG  DIMFGVPSVI  VSRSHRDAGA  PTYMYEYQYR
PSFVSDDRPQ  ELLGDHADEL  FSVWGAPFLK  EGASEEEINL  SKMVMKFWAN
FARNGNPNGE  GLPHWPEYDQ  KEGYLQIGVP  AQAAHRLKDK  EVDFWTELRA
KETAERSSHR  EHVEL
  
```

[**IDENTIFICATION**]

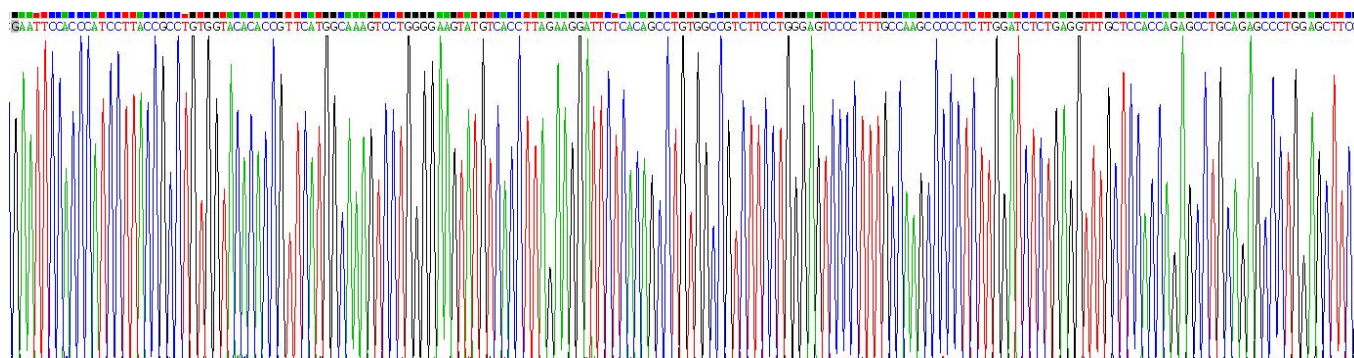


Figure . Gene Sequencing (extract)

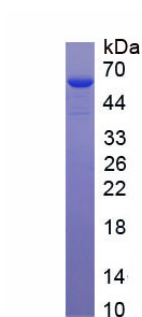


Figure. SDS-PAGE

[**IMPORTANT NOTE**]

The kit is designed for research use only, we will not be responsible for any issue if the kit was used in clinical diagnostic or any other procedures.