

RPC395Hu01 10µg

Recombinant Carboxypeptidase A3 (CPA3)

Organism Species: *Homo sapiens (Human)*

Instruction manual

FOR RESEARCH USE ONLY

NOT FOR USE IN CLINICAL DIAGNOSTIC PROCEDURES

12th Edition (Revised in Aug, 2016)

[PROPERTIES]

Source: Prokaryotic expression

Host: *E.coli*

Residues: Ile110~Ser417

Tags: N-terminal His and GST Tag

Subcellular Location: Secreted

Purity: > 90%

Traits: Freeze-dried powder

Buffer formulation: 20mM Tris, 150mM NaCl, pH8.0, containing 0.01% skl, 5%Trehalose.

Original Concentration: 50µg/mL

Applications: Positive Control; Immunogen; SDS-PAGE; WB.

(May be suitable for use in other assays to be determined by the end user.)

Predicted isoelectric point: 8.9

Predicted Molecular Mass: 66.0kDa

Accurate Molecular Mass: 66kDa as determined by SDS-PAGE reducing conditions.

[USAGE]

Reconstitute in ddH₂O to a concentration of 0.1-0.5 mg/mL. Do not vortex.

[STORAGE AND STABILITY]

Storage: Avoid repeated freeze/thaw cycles.

Store at 2-8°C for one month.

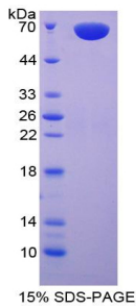
Aliquot and store at -80°C for 12 months.

Stability Test: The thermal stability is described by the loss rate. The loss rate was determined by accelerated thermal degradation test, that is, incubate the protein at 37°C for 48h, and no obvious degradation and precipitation were observed. The loss rate is less than 5% within the expiration date under appropriate storage condition.

[SEQUENCE]

I PGRHSYAKYN NWEKIVAWTE KMMDKYPEMV SRIKIGSTVE
DNPLYVLKIG EKNERRKAIF TDCGIHAREW VSPAFCQWFV YQATKTYGRN
KIMTKLLDRM NFYILPVFNV DGYIWSWTKN RMWRKNRSKN QNSKICIGDL
NRNFNASWNS IPNTNDPCAD NYRGSAPESI KETKAVTNFI RSHLNEIKVY
ITFHYSYQML LFPYGYTSKL PPNHEDLAKV AKIGTDVLST RYETRYIYGP
IESTIYPISG SSLDWAYDLG IKHTFAFELR DKGKFGFLLP ESRIKPTCRE
TMLAVKFIK YILKHTS

[IDENTIFICATION]



[IMPORTANT NOTE]

The kit is designed for research use only, we will not be responsible for any issue if the kit was used in clinical diagnostic or any other procedures.