

RPB197Ra03 100 ug

Recombinant Cartilage Oligomeric Matrix Protein (COMP)

Organism Species: *Rattus norvegicus* (Rat)

Instruction manual

FOR RESEARCH USE ONLY

NOT FOR USE IN CLINICAL DIAGNOSTIC PROCEDURES

13th Edition (Revised in Aug, 2023)

[PROPERTIES]

Source: Prokaryotic expression

Host: *E.coli*

Residues: Arg35~Phe423

Tags: N-terminal His Tag

Subcellular Location: Secreted

Purity: > 90%

Traits: Freeze-dried powder

Buffer formulation: PBS, pH7.4, containing 0.01% SKL, 5% Trehalose.

Original Concentration: 200µg/mL

Applications: Positive Control; Immunogen; SDS-PAGE; WB.

(May be suitable for use in other assays to be determined by the end user.)

Predicted isoelectric point: 4.4

Predicted Molecular Mass: 45.8 kDa

Accurate Molecular Mass: 46 kDa as determined by SDS-PAGE reducing conditions.

[USAGE]

Reconstitute in 10mM PBS (pH7.4) to a concentration of 0.1-1.0 mg/mL. Do not vortex.

[STORAGE AND STABILITY]

Storage: Avoid repeated freeze/thaw cycles.

Store at 2-8°C for one month.

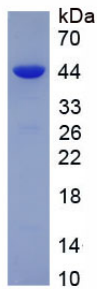
Aliquot and store at -80°C for 12 months.

Stability Test: The thermal stability is described by the loss rate. The loss rate was determined by accelerated thermal degradation test, that is, incubate the protein at 37°C for 48h, and no obvious degradation and precipitation were observed. The loss rate is less than 5% within the expiration date under appropriate storage condition.

[SEQUENCE]

RELQET NAALQDVRELLRHRVKEITF LKNTVMECDA CGMQPARTPG LSVRPVALCA PGSCFPGVVC
TETATGARCG PCPPGYTGNG SHCTDVNECN AHPCFPRVRC INTSPGFHCEACPPGFSGPT
HEGVGLTFAK TNKQVCTDIN ECETGQHNCV PNSVCVNTRGSFQCGPCQPG FVGDQRSGCQ
RRGQHFCPDG SPSPCHEKAD CILERDGSRSCVCAVGWAGN GLLCGRDSDL DGFPDEKLRC
SERQCRKDNC VTPNSGQEDVDRDRIGDAC DPDADGDGVP NEQDNCPLVR NPDQRNSDKD
KWGDACDNCRSQKNDDQKDT DRDGQGDACD DDIDGDRI RN VADNCPRV PN FDQSDSDGDG
VGDACDNCPQ KDNPDQRDVD HDF

[IDENTIFICATION]



[IMPORTANT NOTE]

The kit is designed for research use only, we will not be responsible for any issue if the kit was used in clinical diagnostic or any other procedures.