

RPL307Hu01 10µg

Recombinant Cat Eye Syndrome Chromosome Region, Candidate 1 (CECR1)

Organism Species: *Homo sapiens (Human)*

Instruction manual

FOR RESEARCH USE ONLY

NOT FOR USE IN CLINICAL DIAGNOSTIC PROCEDURES

12th Edition (Revised in Aug, 2016)

[PROPERTIES]

Source: Prokaryotic expression

Host: *E.coli*

Residues: Ile30~Lys511

Tags: N-terminal His Tag

Subcellular Location: Secreted

Purity: > 95%

Traits: Freeze-dried powder

Buffer formulation: 20mM Tris, 150mM NaCl, pH8.0, containing 0.01% SKL, 5% Trehalose.

Original Concentration: 200µg/mL

Applications: Positive Control; Immunogen; SDS-PAGE; WB.

(May be suitable for use in other assays to be determined by the end user.)

Predicted isoelectric point: 8.2

Predicted Molecular Mass: 59.6kDa

Accurate Molecular Mass: 60kDa as determined by SDS-PAGE reducing conditions.

[USAGE]

Reconstitute in 20mM Tris, 150mM NaCl (pH8.0) to a concentration of 0.1-1.0 mg/mL. Do not vortex.

[STORAGE AND STABILITY]

Storage: Avoid repeated freeze/thaw cycles.

Store at 2-8°C for one month.

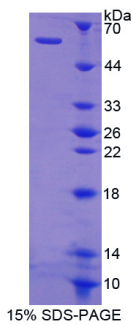
Aliquot and store at -80°C for 12 months.

Stability Test: The thermal stability is described by the loss rate. The loss rate was determined by accelerated thermal degradation test, that is, incubate the protein at 37°C for 48h, and no obvious degradation and precipitation were observed. The loss rate is less than 5% within the expiration date under appropriate storage condition.

[SEQUENCE]

| | | | | | |
|------------|------------|-------------|------------|------------|-----------|
| | | | I | DETRAHLLLK | EKMRLGGRL |
| VLNTKEELAN | ERLMTLKIAE | MKEAMRTLIF | PPSMHFFQAK | HLIERSQVFN | |
| ILRMMPKGAA | LHLHDIGIVT | MDWLVRNVTY | RPHCHICFTP | RGIMQFRFAH | |
| PTPRPSEKCS | KWILLEDYRK | RVQNVTEFDD | SLLRNFTLVT | QHPEVIYTNQ | |
| NVVWSKFETI | FFTISGLIHY | APVFRDYVFR | SMQEFYEDNV | LYMEIRARLL | |
| PVYELSGEHH | DEEWSVKTYQ | EVAQKFEVETH | PEFIGIKIY | SDHRSKDVAV | |
| IAESIRMAMG | LRIKFPTVVA | GFDLVGHEDT | GHSLHDYKEA | LMIPAKDGVK | |
| LPYFFHAGET | DWQGTSIDRN | ILDALMLNTT | RIGHGFALSK | HPAVRTYSWK | |
| KDIPIEVCPI | SNQVLKLVSD | LRNHPVATLM | ATGHPMVISS | DDPAMFGAKG | |
| LSYDFYEVFM | GIGGMKADLR | TLKQLAMNSI | KYSTLLESEK | NTFMEIWKKR | |
| WDKFIADVAT | K | | | | |

[IDENTIFICATION]



[IMPORTANT NOTE]

The kit is designed for research use only, we will not be responsible for any issue if the kit was used in clinical diagnostic or any other procedures.