

RPF625Hu01 50ug

Recombinant Chordin Like Protein 1 (CHRDL1)

Organism Species: *Homo sapiens (Human)*

Instruction manual

FOR RESEARCH USE ONLY

NOT FOR USE IN CLINICAL DIAGNOSTIC PROCEDURES

12th Edition (Revised in Aug, 2016)

[PROPERTIES]

Source: Prokaryotic expression

Host: *E.coli*

Residues: Glu22~Cys450

Tags: N-terminal His Tag

Subcellular Location: Secreted

Purity: > 90%

Traits: Freeze-dried powder

Buffer formulation: 100mMNaHCO₃, 500mMNaCl, pH8.3, containing 0.01% SKL, 5% Trehalose.

Original Concentration: 200µg/mL

Applications: Positive Control; Immunogen; SDS-PAGE; WB.

(May be suitable for use in other assays to be determined by the end user.)

Predicted isoelectric point: 8.5

Predicted Molecular Mass: 52.5kDa

Accurate Molecular Mass: 53kDa as determined by SDS-PAGE reducing conditions.

[USAGE]

Reconstitute in ddH₂O to a concentration of 0.1-1.0 mg/mL. Do not vortex.

[STORAGE AND STABILITY]

Storage: Avoid repeated freeze/thaw cycles.

Store at 2-8°C for one month.

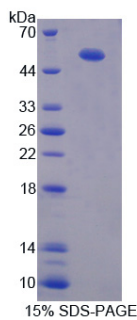
Aliquot and store at -80°C for 12 months.

Stability Test: The thermal stability is described by the loss rate. The loss rate was determined by accelerated thermal degradation test, that is, incubate the protein at 37°C for 48h, and no obvious degradation and precipitation were observed. The loss rate is less than 5% within the expiration date under appropriate storage condition.

[SEQUENCE]

		EQVKHSETY	CMFQDKKYRV	GERWHPYLEP
YGLVYCVNCI	CSENGNVLCS	RVRCPNVHCL	SPVHIPHLCC	PRCPDSLPPV
NNKVTSKSCE	YNGTTYQHGE	LFVAEGLFQN	RQPNQCTQCS	CSEGNVYCGL
KTCPKLTCAF	PVSVPDSCCR	VCRGDGELSW	EHSDGDIFRQ	PANREARHSY
HRSHYDPPPS	RQAGGLSRFP	GARSHRGALM	DSQQASGTIV	QIVINNKHKH
GQVCVSNKGT	YSHGESWHPN	LRAFGIVECV	LTCNVTKQE	CKKIHCPNRY
PCKYPQKIDG	KCKKVCPGKK	AKELPGQSFQ	NKGYFCGEET	MPVYESVFME
DGETTRKIAL	ETERPPQVEV	HVWTIRKGIL	QHFHIEKISK	RMFEELPHFK
LVTRTTLSQW	KIFTEGEAQI	SQMCSSRVCR	TELEDLVKVL	YLERSEKGHC

[IDENTIFICATION]



[IMPORTANT NOTE]

The kit is designed for research use only, we will not be responsible for any issue if the kit was used in clinical diagnostic or any other procedures.