

RPB834Mu01 100µg

Recombinant Coagulation Factor XI (F11)

Organism Species: *Mus musculus* (Mouse)

Instruction manual

FOR RESEARCH USE ONLY

NOT FOR USE IN CLINICAL DIAGNOSTIC PROCEDURES

12th Edition (Revised in Aug, 2016)

[PROPERTIES]

Source: Prokaryotic expression

Host: *E.coli*

Residues: Pro157~Arg389

Tags: N-terminal His Tag

Subcellular Location: Secreted

Purity: > 90%

Traits: Freeze-dried powder

Buffer formulation: 100mMNaHCO₃, 500mMNaCl, pH8.3, containing 0.01% SKL, 5% Trehalose.

Original Concentration: 350µg/mL

Applications: Positive Control; Immunogen; SDS-PAGE; WB.

(May be suitable for use in other assays to be determined by the end user.)

Predicted isoelectric point: 9.3

Predicted Molecular Mass: 29.9kDa

Accurate Molecular Mass: 30kDa as determined by SDS-PAGE reducing conditions.

[USAGE]

Reconstitute in ddH₂O to a concentration of 0-0.5 mg/mL. Do not vortex.

[STORAGE AND STABILITY]

Storage: Avoid repeated freeze/thaw cycles.

Store at 2-8°C for one month.

Aliquot and store at -80°C for 12 months.

Stability Test: The thermal stability is described by the loss rate. The loss rate was determined by accelerated thermal degradation test, that is, incubate the protein at 37°C for 48h, and no obvious degradation and precipitation were observed. The loss rate is less than 5% within the expiration date under appropriate storage condition.

[SEQUENCE]

```

PSVD HRKMCLLKYT RTGTPPTITK LNGVVS GFSL KSCGLSNLAC
IRDIFPNTVL ADLNIDSVVA PDAFVCRRIC THHPTCLFFT FFSQAWPKES
QRHLCLLKTS ESGLPSTRIT KSHALSGFSL QHCRHSVPVF CHPSFYNDTD
FLGEELDIVD VKQETCQKT CTNNARCQFF TYYP SHRLCN ERNRRGRCYL
KLSSNGSPTR ILHGRGGISG YSLRLCKMDN VCTTKINPR
    
```

[IDENTIFICATION]

```

TTCGTTGGACATCGTAAAGTGTCTTTGAGTACCCGAMGCGGACGCACCCCAATAAGACTCAATGGGCGTATCTGGATTTTCTGAGTCTGTCGACTTCAACTTGGCTTGTATGAGGACATTTTCCCTAACAGGTCCTGGAGACTTAACTTGAAGAGCGTGTGGCCCGGAGTCTTTGTGCTGTGTCGATCTCAGCAT
P S V D H R K M C L L K Y T R T G T P T T I T K L N G V V S G F S L K S C G L S N L A C I R D I F P N T V L A D L N I D S V V A P D A F V C R R I C T H
    
```

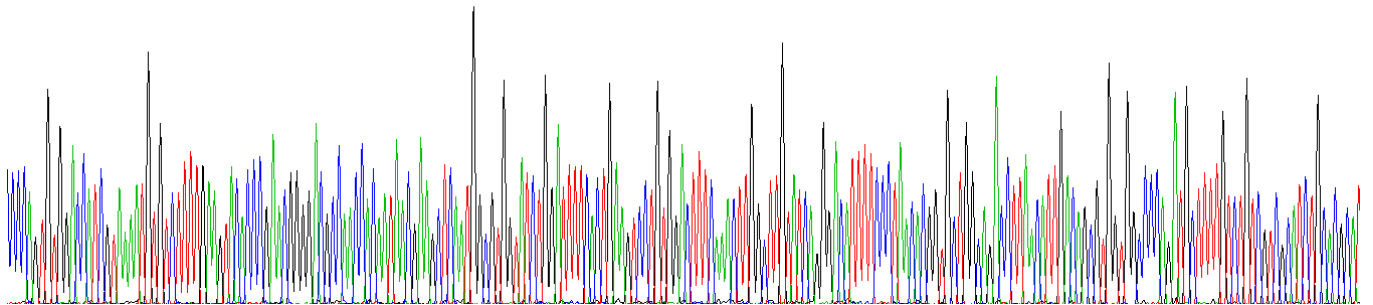


Figure. Gene Sequencing (Extract)

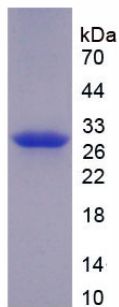


Figure. SDS-PAGE

[IMPORTANT NOTE]

The kit is designed for research use only, we will not be responsible for any issue if the kit was used in clinical diagnostic or any other procedures.