

**RPR876Ra01 100ug**  
**Recombinant Coenzyme Q6 Homolog, Monooxygenase (COQ6)**  
**Organism Species: *Rattus norvegicus* (Rat)**  
***Instruction manual***

FOR RESEARCH USE ONLY  
NOT FOR USE IN CLINICAL DIAGNOSTIC PROCEDURES

---

13th Edition (Revised in Aug, 2023)

**[ PROPERTIES ]**

**Source:** Prokaryotic expression

**Host:** *E.coli*

**Residues:** Met1~Arg476

**Tags:** N-terminal His Tag

**Subcellular Location:** Golgi apparatus

**Purity:** > 90%

**Traits:** Freeze-dried powder

**Buffer formulation:** PBS, pH7.4, containing 0.01% SKL, 5% Trehalose.

**Original Concentration:** 200µg/mL

**Applications:** Positive Control; Immunogen; SDS-PAGE; WB.

(May be suitable for use in other assays to be determined by the end user.)

**Predicted isoelectric point:** 6.7

**Predicted Molecular Mass:** 55.2kDa

**Accurate Molecular Mass:** 55kDa as determined by SDS-PAGE reducing conditions.

**[ USAGE ]**

Reconstitute in 10mM PBS (pH7.4) to a concentration of 0.1-1.0 mg/mL. Do not vortex.

**[ STORAGE AND STABILITY ]**

**Storage:** Avoid repeated freeze/thaw cycles.

Store at 2-8°C for one month.

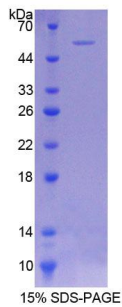
Aliquot and store at -80°C for 12 months.

**Stability Test:** The thermal stability is described by the loss rate. The loss rate was determined by accelerated thermal degradation test, that is, incubate the protein at 37°C for 48h, and no obvious degradation and precipitation were observed. The loss rate is less than 5% within the expiration date under appropriate storage condition.

**[ SEQUENCE ]**

MAARIGPMAG LLCVRWWSTA QLAARGGPLV ACRRWTSST DSVYDVVVS  
GGMVGSAMAC ALGHDIHFHD KKILLLEAGP KKTLEKLSET YSNRVSSISL  
GSTTLLSSFQ AWDHICNMRC KAFRRMQVWD SCSEALIMFD KDNLDDMGYI  
VENDVIMHAI TKQLEAVADR VKVLYESKAV GYAWPCPFSL ADSSPWVHIT  
LGDGSTLQTK LLIGADGHNS GVRQAAGIQN VGWNYDQSAV VATLHLSEAT  
ENNVAVQRFL PSGPIALLPL SDTLSSLVWS TSHAHAAELV SMHEEEFVDA  
INSAFWSDVH HTDFVDSASA MVHHAVALLK PTKVSARQLP PSVAKVDAKS  
RALFPLGLGH AAQYVVRPRVA LIGDAAHRVH PLAGQGVNMG FGDISSLIHY  
LSTAAFNGKD LGSMSHLTGY ETDQRHNTA LLAATDLLKR LYSTSTTPLV  
LLRTWGLQAT NAVSPLKEQI MAFASR

**[ IDENTIFICATION ]**



**[ IMPORTANT NOTE ]**

The kit is designed for research use only, we will not be responsible for any issue if the kit was used in clinical diagnostic or any other procedures.