

**RPA042Po01 100µg**

**Recombinant Colony Stimulating Factor 3, Granulocyte (GCSF)**

**Organism Species: *Sus scrofa*; *Porcine* (Pig)**

***Instruction manual***

FOR RESEARCH USE ONLY

NOT FOR USE IN CLINICAL DIAGNOSTIC PROCEDURES

---

12th Edition (Revised in Aug, 2016)

**[ PROPERTIES ]**

**Source:** Prokaryotic expression

**Host:** *E.coli*

**Residues:** Phe34~Ala193

**Tags:** N-terminal His Tag

**Subcellular Location:** Secreted

**Purity:** > 97%

**Traits:** Freeze-dried powder

**Buffer formulation:** PBS, pH7.4, containing 0.05% SKL, 1mM DTT, 5% Trehalose and Proclin300.

**Original Concentration:** 200µg/mL

**Applications:** Positive Control; Immunogen; SDS-PAGE; WB.

(May be suitable for use in other assays to be determined by the end user.)

**Predicted isoelectric point:** 6.3

**Predicted Molecular Mass:** 18.9kDa

**Accurate Molecular Mass:** 18kDa as determined by SDS-PAGE reducing conditions.

**[ USAGE ]**

Reconstitute in 10mM PBS (pH7.4) to a concentration of 0.1-1.0 mg/mL. Do not vortex.

**[ STORAGE AND STABILITY ]**

**Storage:** Avoid repeated freeze/thaw cycles.

Store at 2-8°C for one month.

Aliquot and store at -80°C for 12 months.

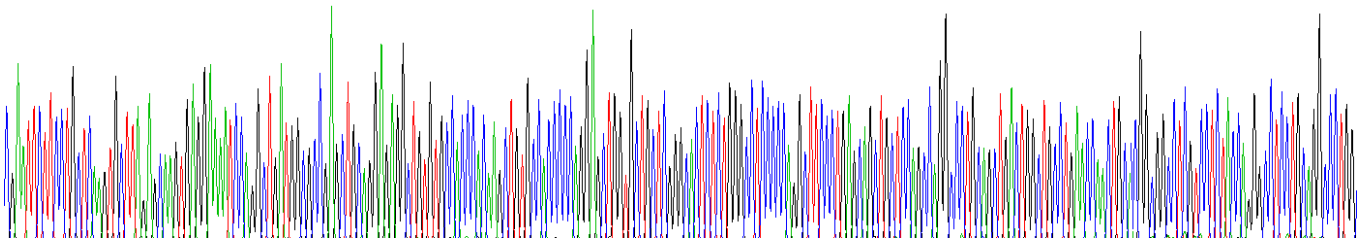
**Stability Test:** The thermal stability is described by the loss rate. The loss rate was determined by accelerated thermal degradation test, that is, incubate the protein at 37°C for 48h, and no obvious degradation and precipitation were observed. The loss rate is less than 5% within the expiration date under appropriate storage condition.

**[ SEQUENCE ]**

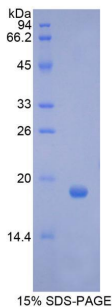
FLLKCLE QVRKIQADGA  
ELQERLCATH KLCHPQELVL LGHSLGLPQA SLSSCSSQAL QLTGCLNQLH  
GGLVLYQGLL QALAGISPEL APALDILQLD VTDLATNIWL QMEDLRMAPA  
SLPTQGTVPT FTSAFQRRAG GVLVVSQ LQS FLELAYRVLR YLA

**[ IDENTIFICATION ]**

CGATTCCTGCTGAGGCTTGGAGAGTGGWATCGGCTGATGCGCCGAGCTGGGGGCGTGGTGGCCCGAGCTGGTGGCCCGGAGTGGGCTGGCTGGCTCTCTGGCCCTCCCGGGCTTCCCTGGGCTGCTCGAGCCGCTGGAGTGGCTGGCTGACCGATCGATGGGCGCTGGCTCTACCGGGCTCTGGGCGCTGG



**Figure . Gene Sequencing (extract)**



**[ IMPORTANT NOTE ]**

The kit is designed for research use only, we will not be responsible for any issue if the kit was used in clinical diagnostic or any other procedures.