

RPA758Hu01 10µg

Recombinant Complement C3 Convertase (C3 Convertase)

Organism Species: *Homo sapiens (Human)*

Instruction manual

FOR RESEARCH USE ONLY

NOT FOR USE IN CLINICAL DIAGNOSTIC PROCEDURES

13th Edition (Revised in Aug, 2023)

[PROPERTIES]

Source: Prokaryotic expression

Host: *E.coli*

Residues: Gln19~Leu333

Tags: N-terminal His Tag

Subcellular Location: Secreted

Purity: > 90%

Traits: Freeze-dried powder

Buffer formulation: PBS, pH7.4, containing 0.05% Tween80, 5% Trehalose.

Original Concentration: 300µg/mL

Applications: Positive Control; Immunogen; SDS-PAGE; WB.

(May be suitable for use in other assays to be determined by the end user.)

Predicted isoelectric point: 9.4

Predicted Molecular Mass: 39.1kDa

Accurate Molecular Mass: 39kDa as determined by SDS-PAGE reducing conditions.

[USAGE]

Reconstitute in 10mM PBS (pH7.4) to a concentration of 0.1-1.0 mg/mL. Do not vortex.

[STORAGE AND STABILITY]

Storage: Avoid repeated freeze/thaw cycles.

Store at 2-8°C for one month.

Aliquot and store at -80°C for 12 months.

Stability Test: The thermal stability is described by the loss rate. The loss rate was determined by accelerated thermal degradation test, that is, incubate the protein at 37°C for 48h, and no obvious degradation and precipitation were observed. The loss rate is less than 5% within the expiration date under appropriate storage condition.

[SEQUENCE]

```

      QK  PRLLLFSPSV  VHLGVPLSVG  VQLQDVPRGQ  VVKGSVFLRN  PSRNNVPCSP
KVDFTLSSER DFALLSLQVP LKDAKSCGLH QLLRGPEVQL VAHSPWLKDS LSRTTNIQGI
NLLFSSRRGH LFLQTDQPIY NPGQVRVRYV FALDQKMRPS TDTITVMVEN SHGLRVRKKE
VYMPSSIFQD DFVIPDISEP GTWKISARFS DGLESNSSTQ FEVKKYVLPN FEVKITPGKP
YILTVPGHLD EMQLDIQARY IYGKPVQGVA YVRFGLLDED GKKTFFRGLE SQTCLVNGQS
HISLSKAEFQ DALEKLNMI TDL
  
```

[IDENTIFICATION]

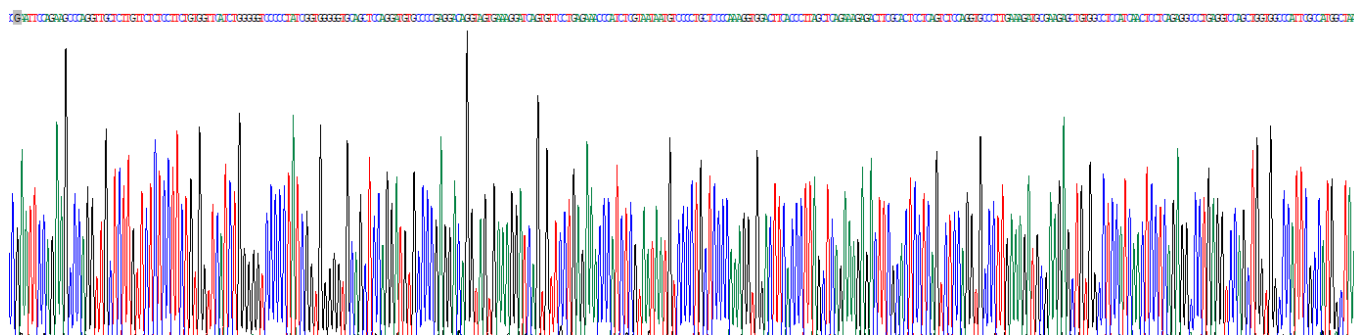


Figure . Gene Sequencing (extract)

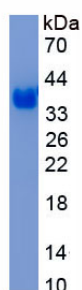


Figure. SDS-PAGE

[IMPORTANT NOTE]

The kit is designed for research use only, we will not be responsible for any issue if the kit was used in clinical diagnostic or any other procedures.