

**RPA758Ra01 100µg**

**Recombinant Complement C3 Convertase (C3 Convertase)**

**Organism Species: *Rattus norvegicus* (Rat)**

***Instruction manual***

FOR RESEARCH USE ONLY

NOT FOR USE IN CLINICAL DIAGNOSTIC PROCEDURES

---

12th Edition (Revised in Aug, 2016)

## **[ PROPERTIES ]**

**Source:** Prokaryotic expression

**Host:** *E.coli*

**Residues:** Ser1321~Asn1663

**Tags:** N-terminal His Tag

**Subcellular Location:** Secreted

**Purity:** > 90%

**Traits:** Freeze-dried powder

**Buffer formulation:** 20mM Tris, 150mM NaCl, pH8.0, containing 0.01% SKL, 5% Trehalose.

**Original Concentration:** 200µg/mL

**Applications:** Positive Control; Immunogen; SDS-PAGE; WB.

(May be suitable for use in other assays to be determined by the end user.)

**Predicted isoelectric point:** 5.2

**Predicted Molecular Mass:** 42.8kDa

**Accurate Molecular Mass:** 43kDa as determined by SDS-PAGE reducing conditions.

## **[ USAGE ]**

Reconstitute in 20mM Tris, 150mM NaCl (pH8.0) to a concentration of 0.1-1.0 mg/mL. Do not vortex.

## **[ STORAGE AND STABILITY ]**

**Storage:** Avoid repeated freeze/thaw cycles.

Store at 2-8°C for one month.

Aliquot and store at -80°C for 12 months.

**Stability Test:** The thermal stability is described by the loss rate. The loss rate was determined by accelerated thermal degradation test, that is, incubate the protein at 37°C for 48h, and no obvious degradation and precipitation were observed. The loss rate is less than 5% within the expiration date under appropriate storage condition.

## **[ SEQUENCE ]**

SEETKQNEGF SLTAKGKGQG TLSVVTVYHA  
 KVKGKTTCCK FDLRVTIKPA PETAKKPQDA KSSMILDICT RYLGDV DATM  
 SILDISM MTG FIPDTNDLEL LSSGVDRYIS KYEMDKAFSN KNTLIIYLEK  
 ISHSEEDCLS FKVHQFFNVG LIQPGSVKVY SYYNLEESCT RFYHPEKDDG  
 MLSKLCHNEM CRCAEENCFM HQSQDQVSLN ERLDKACEPG VDYVYTKLT  
 TIELSDDFDE YIMTIEQVIK SGSDEVQAGQ ERRFISHVKC RNALKLQK GK  
 QYLMWGLSSD LWGKPN TSY IIGKDTWEH WPEAEERQDQ KNQKQCEDLG  
 AFTETMVVFG CPN

**[ IDENTIFICATION ]**

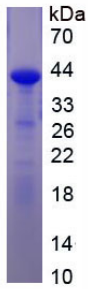


Figure. SDS-PAGE

**[ IMPORTANT NOTE ]**

The kit is designed for research use only, we will not be responsible for any issue if the kit was used in clinical diagnostic or any other procedures.