

**RPB823Ra01 100ug**  
**Recombinant Complement Component 9 (C9)**  
**Organism Species: *Rattus norvegicus* (Rat)**  
***Instruction manual***

FOR RESEARCH USE ONLY  
NOT FOR USE IN CLINICAL DIAGNOSTIC PROCEDURES

---

13th Edition (Revised in Aug, 2023)

## [ **PROPERTIES** ]

**Source:** Prokaryotic expression

**Host:** *E.coli*

**Residues:** Leu336~Arg554

**Tags:** N-terminal His Tag

**Subcellular Location:** Membrane, Secreted

**Purity:** > 95%

**Traits:** Freeze-dried powder

**Buffer formulation:** PBS, pH7.4, containing 0.01% SKL, 5% Trehalose.

**Original Concentration:** 200µg/mL

**Applications:** Positive Control; Immunogen; SDS-PAGE; WB.

(May be suitable for use in other assays to be determined by the end user.)

**Predicted isoelectric point:** 8.1

**Predicted Molecular Mass:** 25.9kDa

**Accurate Molecular Mass:** 28kDa as determined by SDS-PAGE reducing conditions.

## [ **USAGE** ]

Reconstitute in 10mM PBS (pH7.4) to a concentration of 0.1-1.0 mg/mL. Do not vortex.

## [ **STORAGE AND STABILITY** ]

**Storage:** Avoid repeated freeze/thaw cycles.

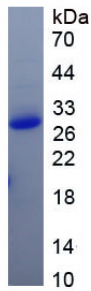
Store at 2-8°C for one month.

Aliquot and store at -80°C for 12 months.

**Stability Test:** The thermal stability is described by the loss rate. The loss rate was determined by accelerated thermal degradation test, that is, incubate the protein at 37°C for 48h, and no obvious degradation and precipitation were observed. The loss rate is less than 5% within the expiration date under appropriate storage condition.

## [ **SEQUENCE** ]

LGGLY ELIYVLDKAS MKEKGVLESD VKRCLGFNLD VSLYTPLQTA LEGPSLTANV NHSDCLKTGD GKVVNISRDH IIDDVISFIR GGTRKQAVLL KEKLLRGAKT IDVNDFINWA SSLDDAPALI  
SQKLSPIYNL IPLTMDAYA KKQNMKAIE DYNNEFSARK CYPQNGGTA ILLDGCQMCSTIKFRGIAC EISKQR

**[ IDENTIFICATION ]****[ IMPORTANT NOTE ]**

The kit is designed for research use only, we will not be responsible for any issue if the kit was used in clinical diagnostic or any other procedures.