

RPC401Ra01 100µg

Recombinant Corticotropin Releasing Hormone Binding Protein (CRHBP)

Organism Species: Rattus norvegicus (Rat)

Instruction manual

FOR IN VITRO USE AND RESEARCH USE ONLY

NOT FOR USE IN CLINICAL DIAGNOSTIC PROCEDURES

10th Edition (Revised in Jan, 2014)

[PROPERTIES]

Residues: Tyr25~Leu322

Tags: Two N-terminal Tags, His-tag and GST-tag

Accession: P24388

Host: *E. coli*

Subcellular Location: Secreted.

Purity: >95%

Endotoxin Level: <1.0EU per 1µg

(determined by the LAL method).

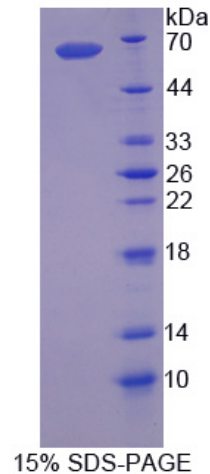
Formulation: Supplied as lyophilized form in PBS, pH7.4, containing 5% trehalose, 0.01% sarcosyl.

Predicted isoelectric point: 5.7

Predicted Molecular Mass: 63.4kDa

Applications: SDS-PAGE; WB; ELISA; IP.

(May be suitable for use in other assays to be determined by the end user.)



[USAGE]

Reconstitute in sterile PBS, pH7.2-pH7.4.

[STORAGE AND STABILITY]

Storage: Avoid repeated freeze/thaw cycles.

Store at 2-8°C for one month.

Aliquot and store at -80°C for 12 months.

Stability Test: The thermal stability is described by the loss rate of the target protein. The loss rate was determined by accelerated thermal degradation test, that is, incubate the protein at 37°C for 48h, and no obvious degradation and precipitation were observed. (Referring from China Biological Products Standard, which was calculated by the Arrhenius equation.) The loss of this protein is less than 5% within the expiration date under appropriate storage condition.

[SEQUENCES]

The sequence of the target protein is listed below.

YLEVQE AAVYDPFLLF SANLKRNLAE EQPYRRALRC LDMLSLPGQF TFTADQPQLH
CAAFFIGEPE EFITIHFDLV SIDCQGGDFL KVFDGWILKG EKFPSSQDHP LPTRERYTDF
CESGLTRRSV TSSQNVAMVF FRVHEPGNGF TITIKTDPNL FPCNIISQTP SGRFALVVPY
QHQCNSFSII YPVTIKISDL ALGHLHGLQL KKPAAGCGGT GDFVELLGGT GLDTSKMMLL
VDLCYPFHGP AQMKISCDNA VVRMVSSGKH MNRVTFEYRQ LEPLELETST RNSIPEYCLS
SL