

RPA109Hu01 10 μ g
Recombinant Creatine Kinase, Muscle (CKM)
Organism Species: *Homo sapiens* (Human)
Instruction manual

FOR RESEARCH USE ONLY
NOT FOR USE IN CLINICAL DIAGNOSTIC PROCEDURES

13th Edition (Revised in Aug, 2023)

[**PROPERTIES**]

Source: Prokaryotic expression

Host: *E.coli*

Residues: Lys11~Leu367

Tags: N-terminal His Tag

Subcellular Location: Cytoplasm

Purity: > 97%

Traits: Freeze-dried powder

Buffer formulation: 20mM Tris, 150mM NaCl, pH8.0, containing 0.01% skl, 5%Trehalose.

Original Concentration: 400µg/mL

Applications: Positive Control; Immunogen; SDS-PAGE; WB.

(May be suitable for use in other assays to be determined by the end user.)

Predicted isoelectric point: 7.3

Predicted Molecular Mass: 41.5kDa

Accurate Molecular Mass: 41kDa as determined by SDS-PAGE reducing conditions.

[**USAGE**]

Reconstitute in 20mM Tris, 150mM NaCl (pH8.0) to a concentration of 0.1-1.0 mg/mL. Do not vortex.

[**STORAGE AND STABILITY**]

Storage: Avoid repeated freeze/thaw cycles.

Store at 2-8°C for one month.

Aliquot and store at -80°C for 12 months.

Stability Test: The thermal stability is described by the loss rate. The loss rate was determined by accelerated thermal degradation test, that is, incubate the protein at 37°C for 48h, and no obvious degradation and precipitation were observed. The loss rate is less than 5% within the expiration date under appropriate storage condition.

[**SEQUENCE**]

```

      KLNYPKPEEY  PDLSKHNNHM  AKVLTLELYK  KLRDKETPSG
FTVDDVIQTG  VDNPGHPFIM  TVGCVAGDEE  SYEVFKELFD  PIISDRHGGY
KPTDKHKTDL  NHENLKGDD  LDPNYVLSSR  VRTGRSIKGY  TLPPHCSRGE
RRAVEKLSVE  ALNSLTGEFK  GKYYPLKSMT  EKEQQQLIDD  HFLFDKPVSP
LLLASGMARD  WPDARGIWHN  DNKSFLVWVN  EEDHLRVISM  EKGGNMKEVF
RRFCVGLQKI  EEIFKKAGHP  FMWNQHLGYV  LTCPSNLGTG  LRGGVHVKLA
HLSKHPKFEE  ILTRLRLQKR  GTGGVDTAAV  GSVFDVSNAD  RLGSSSEVEQV
QLVVDGVKLM  VEMEKKL
  
```

[IDENTIFICATION]

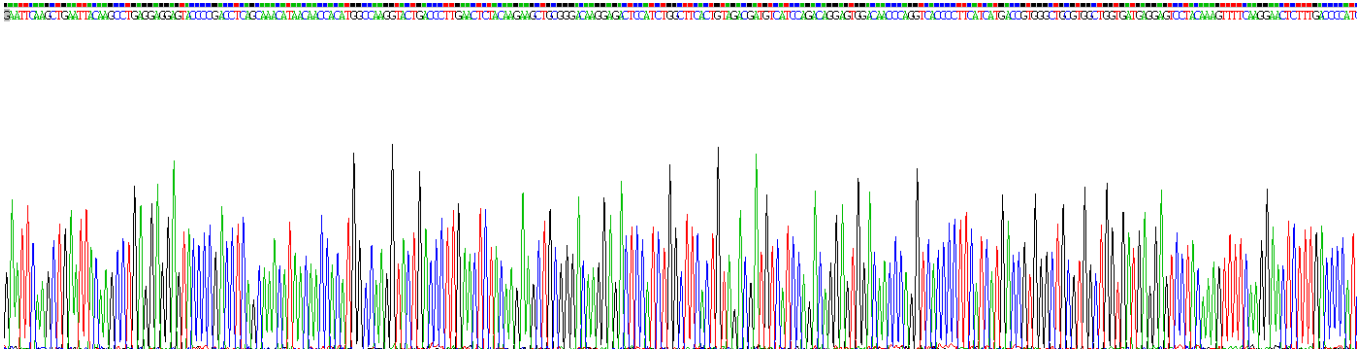
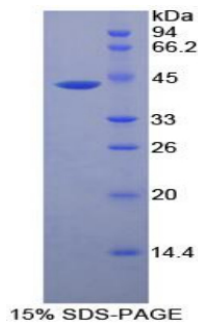


Figure . Gene Sequencing (extract)



[IMPORTANT NOTE]

The kit is designed for research use only, we will not be responsible for any issue if the kit was used in clinical diagnostic or any other procedures.