

**RPD286Hu03 100µg**  
**Recombinant Cytochrome C Oxidase Subunit IV Isoform 1 (COX4I1)**  
**Organism Species: *Homo sapiens (Human)***  
***Instruction manual***

FOR RESEARCH USE ONLY  
NOT FOR USE IN CLINICAL DIAGNOSTIC PROCEDURES

---

13th Edition (Revised in Aug, 2023)

**[ PROPERTIES ]**

**Source:** Prokaryotic expression

**Host:** *E.coli*

**Residues:** Met1~Lys169

**Tags:** His and TrxA Taq

**Subcellular Location:** Mitochondrion

**Purity:** > 80%

**Traits:** Freeze-dried powder

**Buffer formulation:** PBS, pH7.4, containing 0.01% SKL, 5% Trehalose .

**Original Concentration:** 200µg/mL

**Applications:** Positive Control; Immunogen; SDS-PAGE; WB.

(May be suitable for use in other assays to be determined by the end user.)

**Predicted isoelectric point:** 9.5

**Predicted Molecular Mass:** 40.0kDa

**Accurate Molecular Mass:** 38&30kDa as determined by SDS-PAGE reducing conditions.

**[ USAGE ]**

Reconstitute in 10mM PBS (pH7.4) to a concentration of 0.1-1.0 mg/mL. Do not vortex.

**[ STORAGE AND STABILITY ]**

**Storage:** Avoid repeated freeze/thaw cycles.

Store at 2-8°C for one month.

Aliquot and store at -80°C for 12 months.

**Stability Test:** The thermal stability is described by the loss rate. The loss rate was determined by accelerated thermal degradation test, that is, incubate the protein at 37°C for 48h, and no obvious degradation and precipitation were observed. The loss rate is less than 5% within the expiration date under appropriate storage condition.

**[ SEQUENCE ]**

MLATRVFSLV GKRAISTSVC VRAHESVVKS EDFSLPAYMD RRDHPLPEVA  
HVKHLSASQK ALKEKEKASW SSLSMDEKVE LYRIKFESF AEMNRGSNEW  
KTVVGGAMFF IGFTALVIMW QKHYVYGPLP QSFDKEWVAK QTKRMLDMKV  
NPIQGLASKW DYEKNEWKK

[ **IDENTIFICATION** ]

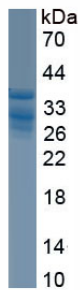


Figure. SDS-PAGE

[ **IMPORTANT NOTE** ]

The kit is designed for research use only, we will not be responsible for any issue if the kit was used in clinical diagnostic or any other procedures.