

**RPD546Ra01 100µg**  
**Recombinant Cytochrome P450 11B1 (CYP11B1)**  
**Organism Species: *Rattus norvegicus* (Rat)**  
***Instruction manual***

FOR RESEARCH USE ONLY  
NOT FOR USE IN CLINICAL DIAGNOSTIC PROCEDURES

---

13th Edition (Revised in Aug, 2023)

**[ PROPERTIES ]**

**Source:** Prokaryotic expression

**Host:** *E.coli*

**Residues:** Met1~Val498 (Accession # P15393)

**Tags:** N-terminal His Tag

**Subcellular Location:** Mitochondrion

**Purity:** > 97%

**Traits:** Freeze-dried powder

**Buffer formulation:** PBS, pH7.4, containing 0.01% SKL, 5% Trehalose.

**Original Concentration:** 200µg/mL

**Applications:** Positive Control; Immunogen; SDS-PAGE; WB.

(May be suitable for use in other assays to be determined by the end user.)

**Predicted isoelectric point:** 9.6

**Predicted Molecular Mass:** 61.2kDa

**Accurate Molecular Mass:** 61kDa as determined by SDS-PAGE reducing conditions.

**[ USAGE ]**

Reconstitute in 10mM PBS (pH7.4) to a concentration of 0.1-1.0 mg/mL. Do not vortex.

**[ STORAGE AND STABILITY ]**

**Storage:** Avoid repeated freeze/thaw cycles.

Store at 2-8°C for one month.

Aliquot and store at -80°C for 12 months.

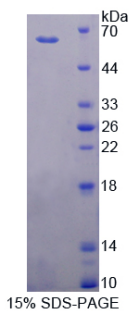
**Stability Test:** The thermal stability is described by the loss rate. The loss rate was determined by accelerated thermal degradation test, that is, incubate the protein at 37°C for 48h, and no obvious degradation and precipitation were observed. The loss rate is less than 5% within the expiration date under appropriate storage condition.

**[ SEQUENCE ]**

```

MALRVTADVW LARPWQCLHR TRALGTTAKV APKTLKPFEA IPQYSRNKWL
KMIQILREQG QENLHLEMHQ AFQELGPIFR HSAGGAQIVS VMLPEDAEKL
HQVESILPHR MPLEPWWAHR ELRGLRRGVF LLNGADWRFN RLQLNPNMLS
PKAIQSFVPF VDVVARDFVE NLKKRMLENV HGSMSINIQS NMFNYTMEAS
HFVISGERLG LTGHDLKPES VTFTHALHSM FKSTTQLMFL PKSLTRWTST
RVWKEHFDSW DIISEYVTKC IKNVYRELAE GRQQSWSVIS EMVAQSTLSM
DAIHANSMEL IAGSVDTTAI SLVMTLFELA RNPDVQQALR QESLAAEASI
VANPQKAMSD LPLLRAALKE TLRLYPVGSF VERIVHSDLV LQNYHVPAGT
FVIIYLYSMG RNPAVFPRPE RYMPQRWLER KRSPQHLAGF FGVRQCLGRR
LAEVEMLLLL HHMLKTFQVE TLRQEDMQMV FRLLMPSSS PFLTFRPV
  
```

**[ IDENTIFICATION ]**



**[ IMPORTANT NOTE ]**

The kit is designed for research use only, we will not be responsible for any issue if the kit was used in clinical diagnostic or any other procedures.