

RPC016Ra01 100ug
Recombinant Cytochrome P450 17A1 (CYP17A1)
Organism Species: *Rattus norvegicus* (Rat)
Instruction manual

FOR RESEARCH USE ONLY
NOT FOR USE IN CLINICAL DIAGNOSTIC PROCEDURES

13th Edition (Revised in Aug, 2023)

[PROPERTIES]

Source: Prokaryotic expression

Host: *E.coli*

Residues: Thr201~Thr507

Tags: N-terminal His Tag

Subcellular Location: Membrane

Purity: > 97%

Traits: Freeze-dried powder

Buffer formulation: PBS, pH7.4, containing 0.01% SKL, 5% Trehalose.

Original Concentration: 200µg/mL

Applications: Positive Control; Immunogen; SDS-PAGE; WB.

(May be suitable for use in other assays to be determined by the end user.)

Predicted isoelectric point: 5.23

Predicted Molecular Mass: 38.4kDa

Accurate Molecular Mass: 38kDa as determined by SDS-PAGE reducing conditions.

[USAGE]

Reconstitute in 10mM PBS (pH7.4) to a concentration of 0.1-1.0 mg/mL. Do not vortex.

[STORAGE AND STABILITY]

Storage: Avoid repeated freeze/thaw cycles.

Store at 2-8°C for one month.

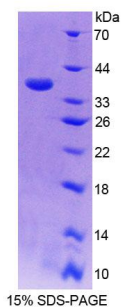
Aliquot and store at -80°C for 12 months.

Stability Test: The thermal stability is described by the loss rate. The loss rate was determined by accelerated thermal degradation test, that is, incubate the protein at 37°C for 48h, and no obvious degradation and precipitation were observed. The loss rate is less than 5% within the expiration date under appropriate storage condition.

[SEQUENCE]

TEGIVDATGD RNLVDIFFWL TIFPNKGLEV IKGYAKVRNE VLTGIFEKCR
EKFDSQSISS LTDILIQAKM NSDNNNSCEG RDPDVFSDRH ILATVGDIFG
AGIETTTTVL KWILAFVHN PEVKKKIQKE IDQYVGFSTR PTFNDRSHLL
MLEATIREVL RIRPVAPMLI PHKANVDSSI GEFTVPKDTL VVVNLWALHH
DENEWDQPDQ FMPERFLDPT GSHLITPTQS YLPPGAGPRS CIGEALARQE
LFVFTALLQ RFDLDVSDDK QLPRLEGDPK VVFLIDPFKV KITVRQAWMD
AQAEVST

[IDENTIFICATION]



[IMPORTANT NOTE]

The kit is designed for research use only, we will not be responsible for any issue if the kit was used in clinical diagnostic or any other procedures.