

**RPA492Mu01 100µg**

**Recombinant Cytokeratin 1 (CK1)**

**Organism Species: *Mus musculus* (Mouse)**

***Instruction manual***

FOR RESEARCH USE ONLY

NOT FOR USE IN CLINICAL DIAGNOSTIC PROCEDURES

---

12th Edition (Revised in Aug, 2016)

**[ PROPERTIES ]**

**Source:** Prokaryotic expression

**Host:** *E.coli*

**Residues:** Arg189~Glu497

**Tags:** N-terminal His Tag

**Subcellular Location:** Secreted

**Purity:** > 97%

**Traits:** Freeze-dried powder

**Buffer formulation:** PBS, pH7.4, containing 0.01% SKL, 5% Trehalose.

**Original Concentration:** 200µg/mL

**Applications:** Positive Control; Immunogen; SDS-PAGE; WB.

(May be suitable for use in other assays to be determined by the end user.)

**Predicted isoelectric point:** 5.1

**Predicted Molecular Mass:** 37.4kDa

**Accurate Molecular Mass:** 36kDa as determined by SDS-PAGE reducing conditions.

**[ USAGE ]**

Reconstitute in 10mM PBS (pH7.4) to a concentration of 0.1-1.0 mg/mL. Do not vortex.

**[ STORAGE AND STABILITY ]**

**Storage:** Avoid repeated freeze/thaw cycles.

Store at 2-8°C for one month.

Aliquot and store at -80°C for 12 months.

**Stability Test:** The thermal stability is described by the loss rate. The loss rate was determined by accelerated thermal degradation test, that is, incubate the protein at 37°C for 48h, and no obvious degradation and precipitation were observed. The loss rate is less than 5% within the expiration date under appropriate storage condition.

**[ SEQUENCE ]**

```

RE QIKSLNDKFA
SFIDKVRFL E QQNQVLQTKW ELLQQVDTTT RTQNLDPFFE NYISILRRKV
DSLKSDQSRM DSELKNMQDL VEEYRTKYED EINKRTNAEN EFVTIKKDVD
SAYMTKVELQ AKADALQQDI DFFSALYQME MSQMOTQISE TNVLSMDNN
RSLDLGIIIS EVKAQYDSIC QRSKAEAEF YQSKYEELQI TAGKHGDSVR
NTKMEISELN RMIQRLRSEI DGCKKQISQI QQNINDAEQR GEKALKDAQN
KLNEIEDALS QCKEDLARLL RDFQELMNTK LALDMEIATY KKLLEGE

```

**[ IDENTIFICATION ]**

G A A T T C A G A G A G C A G A T C A A G T C A C T C A A T G A C A A G T T T G C C T C C T T C A T C G A C A A G G T G C G C T T C T A G A G C A C A A A A C C A G G T G C T A C A A A C C A A A T G G G A G C T G C T G C A G C A G G T A G A C C A C A A C C C G G A C C A A A A C T T A G A C C C T T T T T T G A G A A C T A T A T C A G C A

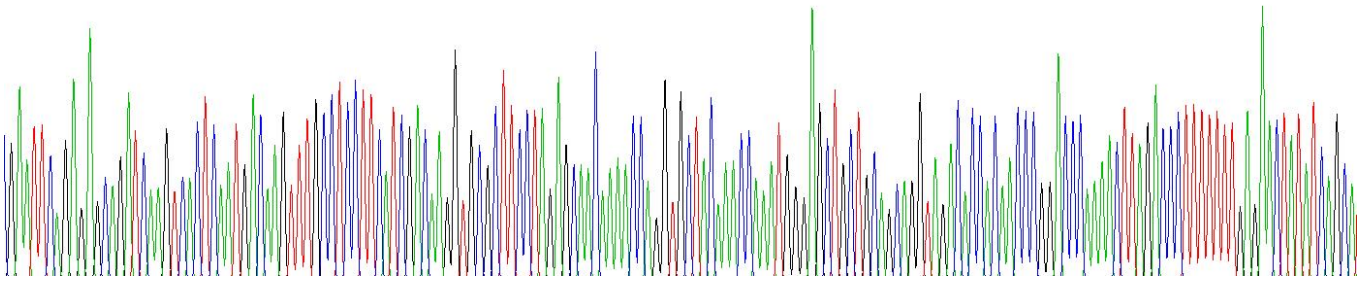
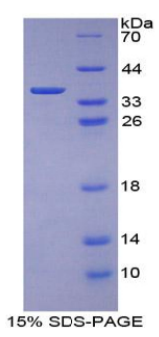


Figure . Gene Sequencing (extract)



**[ IMPORTANT NOTE ]**

The kit is designed for research use only, we will not be responsible for any issue if the kit was used in clinical diagnostic or any other procedures.