

**RPJ251Hu01 100µg**

**Recombinant Deleted In Malignant Brain Tumors 1 (DMBT1)**

**Organism Species: *Homo sapiens (Human)***

***Instruction manual***

FOR RESEARCH USE ONLY

NOT FOR USE IN CLINICAL DIAGNOSTIC PROCEDURES

---

12th Edition (Revised in Aug, 2016)

**[ PROPERTIES ]**

**Source:** Prokaryotic expression

**Host:** *E.coli*

**Residues:** Cys2008~Arg2413

**Tags:** N-terminal His Tag

**Subcellular Location:** Secreted

**Purity:** > 95%

**Traits:** Freeze-dried powder

**Buffer formulation:** 20mM Tris, 150mM NaCl, pH8.0, containing 0.01% SKL, 5% Trehalose.

**Original Concentration:** 200µg/mL

**Applications:** Positive Control; Immunogen; SDS-PAGE; WB.

(May be suitable for use in other assays to be determined by the end user.)

**Predicted isoelectric point:** 6.7

**Predicted Molecular Mass:** 49.9kDa

**Accurate Molecular Mass:** 50kDa as determined by SDS-PAGE reducing conditions.

**[ USAGE ]**

Reconstitute in 20mM Tris, 150mM NaCl (pH8.0) to a concentration of 0.1-1.0 mg/mL. Do not vortex.

**[ STORAGE AND STABILITY ]**

**Storage:** Avoid repeated freeze/thaw cycles.

Store at 2-8°C for one month.

Aliquot and store at -80°C for 12 months.

**Stability Test:** The thermal stability is described by the loss rate. The loss rate was determined by accelerated thermal degradation test, that is, incubate the protein at 37°C for 48h, and no obvious degradation and precipitation were observed. The loss rate is less than 5% within the expiration date under appropriate storage condition.

**[ SEQUENCE ]**

```

CGG FLSQPSGDFS SPFYPGNYPN NAKCVWDIEV QNNYRVTVIF
RDVQLEGGCN YDYIEVFDGP YRSSPLIARV CDGARGSFYS SSNFMSIRFI
SDHSITRRGF RAEYYSSPSN DSTNLLCLPN HMQASVRSY LQSLGFSASD
LVISTWNGYY ECRPQITPNL VIFTIPYSGC GTFKQADNDT IDYSNFLTAA
VSGGIKRRT DLRIHVSCRM LQNTWVDTMY IANDTIHVAN NTIQVEEVQY
GNFDVNISFY TSSSFLYPVT SRPYVVDLNQ DLYVQAEILH SDAVLTLFVD
TCVASPYSND FTSLTYDLIR SGCVRDDTYG PYSSPSLRIA RFRFRAFHFL
NRFPSVYLRC KMVVCRAYDP SSRCYRGCVL RSKRDVGSYQ EKVDVVLGPI
QLQTPPRREE EPR
    
```

**[ IDENTIFICATION ]**

TTGTGGCGSTTTTCTGAGCCAGCGGAGCGGCGATTTTAGCAGTCGGTTTATTCGCGTAAATTAATGCAAAATGTTGGGATTTGAGGTCAGAAATTAATTCGCGTTACCGTGAATTTTTCGCGATTTTTCGCGATGTTTCAGCTGGAAAGGTGGTTGCCAATTATGATATATGAAATTTTCGAGG  
C G G F L S Q P S G D F S S P F Y P G N Y P N A K C V W D I E V Q N N Y R V T V I F R D V Q L E G G C N Y D Y I E V F D G

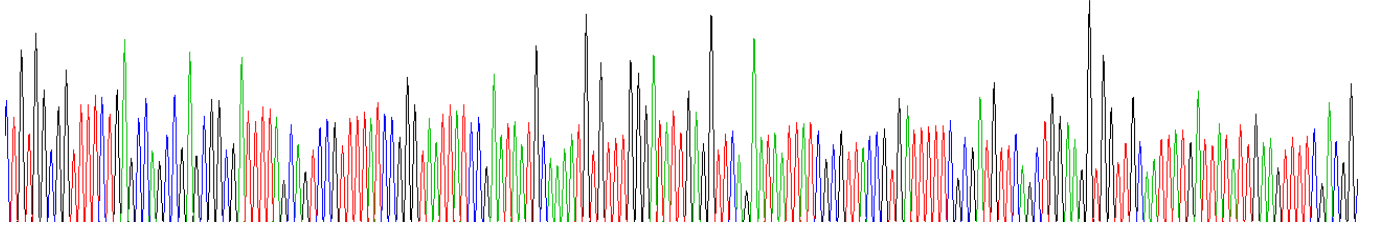


Figure. Gene Sequencing (Extract)

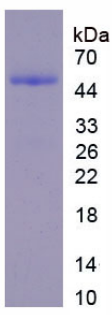


Figure. SDS-PAGE

**[ IMPORTANT NOTE ]**

The kit is designed for research use only, we will not be responsible for any issue if the kit was used in clinical diagnostic or any other procedures.