

RPC445Hu01 10µg

Recombinant Dysferlin (DYSF)

Organism Species: *Homo sapiens (Human)*

Instruction manual

FOR RESEARCH USE ONLY

NOT FOR USE IN CLINICAL DIAGNOSTIC PROCEDURES

12th Edition (Revised in Aug, 2016)

[PROPERTIES]

Source: Prokaryotic expression

Host: *E.coli*

Residues: Met1~Tyr479

Tags: N-terminal His Tag

Subcellular Location: Membrane

Purity: > 95%

Traits: Freeze-dried powder

Buffer formulation: PBS, pH7.4, containing 0.01% SKL, 5% Trehalose.

Original Concentration: 250µg/mL

Applications: Positive Control; Immunogen; SDS-PAGE; WB.

(May be suitable for use in other assays to be determined by the end user.)

Predicted isoelectric point: 5.8

Predicted Molecular Mass: 56.9KDa

Accurate Molecular Mass: 57kDa as determined by SDS-PAGE reducing conditions.

[USAGE]

Reconstitute in 10mM PBS (pH7.4) to a concentration of 0.1-1.0 mg/mL. Do not vortex.

[STORAGE AND STABILITY]

Storage: Avoid repeated freeze/thaw cycles.

Store at 2-8°C for one month.

Aliquot and store at -80°C for 12 months.

Stability Test: The thermal stability is described by the loss rate. The loss rate was determined by accelerated thermal degradation test, that is, incubate the protein at 37°C for 48h, and no obvious degradation and precipitation were observed. The loss rate is less than 5% within the expiration date under appropriate storage condition.

[SEQUENCE]

```

MLRVFILYAE NVHTPDTDIS DAYCSAVFAG VKKRTKVIKN SVNVPVWNEGF
EWDLKGIPLD QGSELHVVVK DHETMGRNRF LGEAKVPLRE VLATPSLSAS
FNAPLLDTKK QPTGASLVLQ VSYTPLPGAV PLFPPPTPLE PSPTLPDLV
VADTGGEEDT EDQGLTGDEA EPFLDQSGGP GAPTPRKLK SRPPPHYPGI
KRKRSAPTSR KLLSDKPQDF QIRVQVIEGR QLPGVNIKPV VKVTAAGQTK
RTRIHKGNP LFNELFFNL FDSPGELFDE PIFITVVDSR SLRTDALLGE
FRMDVGTIYR EPRHAYLRKW LLLSDPDDFS AGARGYLKTS LCVLGPDEA
PLERKDPSED KEDIESNLLR PTGVALRGH FCLKVFRAED LPQMDDAVMD
NVKQIFGFES NKKNLVDPFV EVSFAGKMLC SKILEKTANP QWNQNITLPA
MFPSMCEKMR IRIIDWDRLT HNDIVATTY
    
```

[IDENTIFICATION]

AGATTTCATGCTGAGGGTCTTCATCCCTCTATGCGCGAAGGTCCACACACCCGACACCACA?CAGCGATGCTACTGCTCTTCGGTGTTTGCAAGGGTGAAGAGAGAACCAAAGTCATCAAGAACAGGTTGACCCCTGTATGGATGAGGGATTGGAATGGGACCTCAAGGGCATCCCC

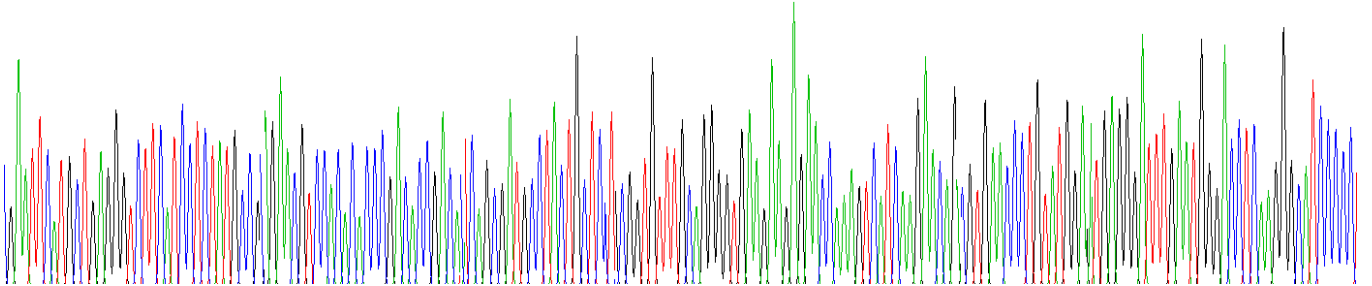
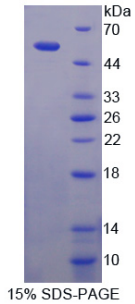


Figure . Gene Sequencing (extract)



[IMPORTANT NOTE]

The kit is designed for research use only, we will not be responsible for any issue if the kit was used in clinical diagnostic or any other procedures.