

RPB449Mu01 1mg

Recombinant Enolase 1 (ENO1)

Organism Species: *Mus musculus* (Mouse)

Instruction manual

FOR RESEARCH USE ONLY

NOT FOR USE IN CLINICAL DIAGNOSTIC PROCEDURES

13th Edition (Revised in Aug, 2023)

[PROPERTIES]

Source: Prokaryotic expression

Host: *E.coli*

Residues: Met1~Lys434

Tags: N-terminal His Tag

Subcellular Location: Membrane, Cytoplasm

Purity: > 90%

Traits: Freeze-dried powder

Buffer formulation: PBS, pH7.4, containing 0.01% Sarcosyl, 5% Trehalose.

Original Concentration: 250µg/mL

Applications: Positive Control; Immunogen; SDS-PAGE; WB.

(May be suitable for use in other assays to be determined by the end user.)

Predicted isoelectric point: 6.7

Predicted Molecular Mass: 49.5kDa

Accurate Molecular Mass: 48kDa as determined by SDS-PAGE reducing conditions.

[USAGE]

Reconstitute in 10mM PBS (pH7.4) to a concentration of 0.1-1.0 mg/mL. Do not vortex.

[STORAGE AND STABILITY]

Storage: Avoid repeated freeze/thaw cycles.

Store at 2-8°C for one month.

Aliquot and store at -80°C for 12 months.

Stability Test: The thermal stability is described by the loss rate. The loss rate was determined by accelerated thermal degradation test, that is, incubate the protein at 37°C for 48h, and no obvious degradation and precipitation were observed. The loss rate is less than 5% within the expiration date under appropriate storage condition.

[SEQUENCE]

MSILRIHARE IFDSRGNPTV EVDLYTAKGL FRAAVPSGAS TGIYEALRLR
DNDKTRFMGK GVSQAVEHIN KTIAPALVSK KVNVEQEKI DKLMIEMDGT
ENKSKFGANA ILGVSLAVCK AGAVEKGVPL YRHIADLAGN PEVILPVPAF
NVIINGGSHAG NKLAMQEFMI LPVGASSFRE AMRIGAEVYH NLKNVIKEY
GKDATNVGDE GGFAPNILEN KEALELLKTA IAKAGYTDQV VIGMDVAASE
FYRSGKYDLD FKSPDDPSRY ITPDQLADLY KSFVQNYPVV SIEDPFDQDD
WGAWQKFTAS AGIQVVGDDL TVTNPCKRIAK AASEKSCNCL LLKVNQIGSV
TESLQACKLA QSNQWGVMS HRSGETEDTF IADLVVGLCT GQIKTGAPCR
SERLAKYNQI LRIEELGSK AKFAGRSFRN PLAK

[IDENTIFICATION]

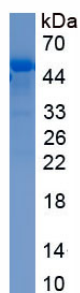


Figure. SDS-PAGE

[IMPORTANT NOTE]

The kit is designed for research use only, we will not be responsible for any issue if the kit was used in clinical diagnostic or any other procedures.