

RPE112Hu02 50µg

Recombinant Ephrin B2 (EFNB2)

Organism Species: *Homo sapiens (Human)*

Instruction manual

FOR RESEARCH USE ONLY

NOT FOR USE IN CLINICAL DIAGNOSTIC PROCEDURES

12th Edition (Revised in Aug, 2016)

[PROPERTIES]

Source: Prokaryotic expression

Host: *E.coli*

Residues: Ile28~Ala229

Tags: N-terminal His Tag

Subcellular Location: Membrane

Purity: > 95%

Traits: Freeze-dried powder

Buffer formulation: 20mM Tris, 150mM NaCl, pH8.0, containing 0.01% SKL, 5% Trehalose.

Original Concentration: 400µg/mL

Applications: Positive Control; Immunogen; SDS-PAGE; WB.

(May be suitable for use in other assays to be determined by the end user.)

Predicted isoelectric point: 6.8

Predicted Molecular Mass: 25.9kDa

Accurate Molecular Mass: 29kDa as determined by SDS-PAGE reducing conditions.

Phenomenon explanation:

The possible reasons that the actual band size differs from the predicted are as follows:

1. Splice variants: Alternative splicing may create different sized proteins from the same gene.
2. Relative charge: The composition of amino acids may affect the charge of the protein.
3. Post-translational modification: Phosphorylation, glycosylation, methylation etc.
4. Post-translation cleavage: Many proteins are synthesized as pro-proteins, and then cleaved to give the active form.
5. Polymerization of the target protein: Dimerization, multimerization etc.

[USAGE]

Reconstitute in 20mM Tris, 150mM NaCl (pH8.0) to a concentration of 0.1-1.0 mg/mL. Do not vortex.

[STORAGE AND STABILITY]

Storage: Avoid repeated freeze/thaw cycles.

Store at 2-8°C for one month.

Aliquot and store at -80°C for 12 months.

Stability Test: The thermal stability is described by the loss rate. The loss rate was determined by accelerated thermal degradation test, that is, incubate the protein at 37°C for 48h, and no obvious degradation and precipitation were observed. The loss rate is less than 5% within the expiration date under appropriate storage condition.

[SEQUENCE]

```

                                IVL EPIYWNSSNS KFLPGQGLVL
Y P Q I G D K L D I   I C P K V D S K T V   G Q Y E Y Y K V Y M   V D K D Q A D R C T   I K K E N T P L L N
C A K P D Q D I K F   T I K F Q E F S P N   L W G L E F Q K N K   D Y Y I I S T S N G   S L E G L D N Q E G
G V C Q T R A M K I   L M K V G Q D A S S   A G S T R N K D P T   R R P E L E A G T N   G R S T T S P F V
K P N P G S S T D G   N S A G H S G N N I   L G S E V A L F A
    
```

[IDENTIFICATION]

GGATCCAGGTTTGGGCTATCATGGATTCCTGGACTCGAATTCTCCCTGGCAGGACTGGTACTATACCCGCGATAGCGCGAATGGATATATTGCCAAGTGGACTCMAACTGTTGCCGATAGATATATAAGTTTATATGGTGATAAGCCAGCGCGATGCCTATTAGAGGAAATACCCCTCCCTCACTGGCCAAAGCGCCAGATGAA

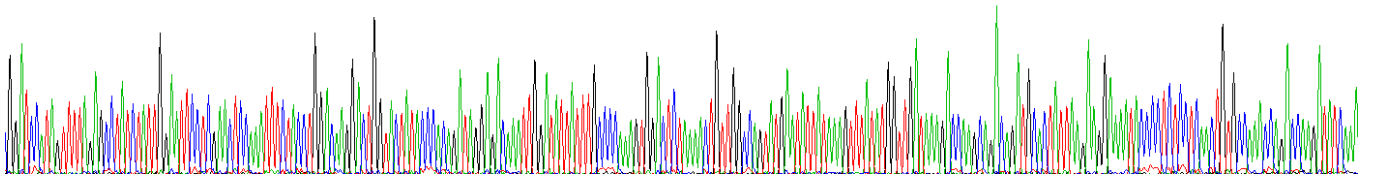


Figure . Gene Sequencing (extract)

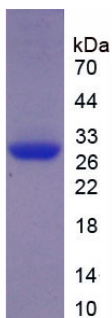


Figure. SDS-PAGE

[IMPORTANT NOTE]

The kit is designed for research use only, we will not be responsible for any issue if the kit was used in clinical diagnostic or any other procedures.