

**RPE645Mu01 200µg**

**Recombinant FK506 Binding Protein 5 (FKBP5)**

**Organism Species: *Mus musculus* (Mouse)**

***Instruction manual***

FOR RESEARCH USE ONLY

NOT FOR USE IN CLINICAL DIAGNOSTIC PROCEDURES

---

13th Edition (Revised in Aug, 2023)

**[ PROPERTIES ]**

**Source:** Prokaryotic expression

**Host:** *E.coli*

**Residues:** Thr2~Val456

**Tags:** N-terminal His Tag

**Subcellular Location:** Nucleus, Cytoplasm

**Purity:** > 90%

**Traits:** Freeze-dried powder

**Buffer formulation:** PBS, pH7.4, containing 0.01% SKL, 5% Trehalose .

**Original Concentration:** 800µg/mL

**Applications:** Positive Control; Immunogen; SDS-PAGE; WB.

(May be suitable for use in other assays to be determined by the end user.)

**Predicted isoelectric point:** 7.6

**Predicted Molecular Mass:** 52.1kDa

**Accurate Molecular Mass:** 52kDa as determined by SDS-PAGE reducing conditions.

**[ USAGE ]**

Reconstitute in ddH<sub>2</sub>O to a concentration of 0.1-1.0 mg/mL. Do not vortex.

**[ STORAGE AND STABILITY ]**

**Storage:** Avoid repeated freeze/thaw cycles.

Store at 2-8°C for one month.

Aliquot and store at -80°C for 12 months.

**Stability Test:** The thermal stability is described by the loss rate. The loss rate was determined by accelerated thermal degradation test, that is, incubate the protein at 37°C for 48h, and no obvious degradation and precipitation were observed. The loss rate is less than 5% within the expiration date under appropriate storage condition.

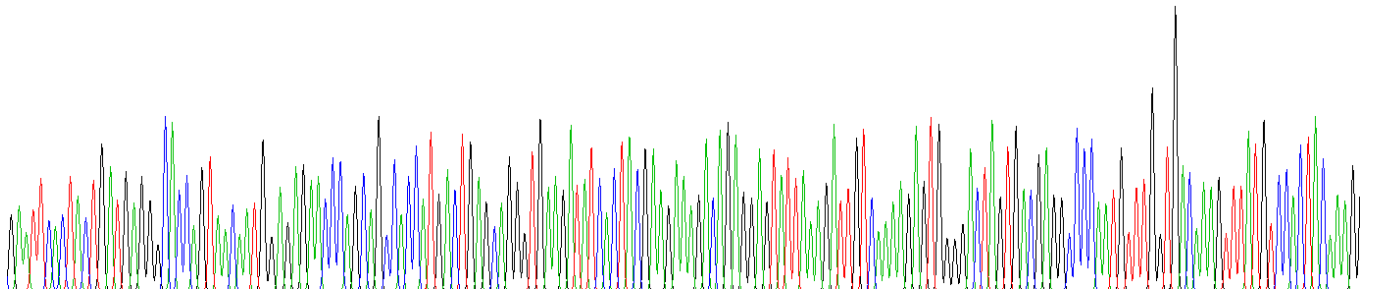
**[ SEQUENCE ]**

```

TTDEGTSNN  GENPAATMTE  QGEDITTKKD  RGVLKIVKRV  GTSDEAPMFG
DKVYVHYKGM  LSDGKKFDSS  HDRKKPFASF  LGQGQVIKAW  DIGVSTMKKG
EICHLLCKPE  YAYGSAGHLQ  KIPSNATLFF  EIELDFKGE  DLFEDSGVIR
RIKRKGEYS  NPNEGATVKV  HLEGCCGGRT  FDCRDVVFVV  GEGEDHDIPI
GIDKALVKMQ  REEQCILYLG  PRYGFGEAGK  PKFGIDPNAE  LMYEVTLSF
EKAKESWEMD  TKEKLTQAAI  VKEKGTVYFK  GGKYTQAVIQ  YRKIVSWLEM
EYGLSEKESK  ASESFLAAF  LNLAMCYLKL  REYNKAVECC  DKALGLDSAN
EKGLYRRGEA  QLLMNDFESA  KGDFEKVLAV  NPQNRAARLQ  ISMCQRKAKE
HNERDRRVYA  NMFKKFAERD  AKEEASKAGS  KKAVEGAAGK  QHESQAMEEG
KAKGHV
    
```

**[ IDENTIFICATION ]**

GAATTCACCTAGATGAGGCCACCACTAAACAATGGAGAGAACCCAGCCACCATGACTGAGCAGGGTGAAGATATCACTACGAAGAAAGACA GAGGAGTATTAAAATTGTCAAAGAGTGGGGACTAGTGACGAGGCCCAATGTTTGGTGACAAAGTTTTATGTCCACTACAAAGT



**Figure . Gene Sequencing (extract)**

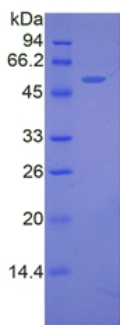


Figure. SDS-PAGE

**[ IMPORTANT NOTE ]**

The kit is designed for research use only, we will not be responsible for any issue if the kit was used in clinical diagnostic or any other procedures.