

**RPB215Ra01 50µg**  
**Recombinant Fibrinogen Beta Chain (FGB)**  
**Organism Species: *Rattus norvegicus* (Rat)**  
***Instruction manual***

FOR RESEARCH USE ONLY  
NOT FOR USE IN CLINICAL DIAGNOSTIC PROCEDURES

---

12th Edition (Revised in Aug, 2016)

**[ PROPERTIES ]**

**Source:** Prokaryotic expression

**Host:** *E.coli*

**Residues:** Gly33~Gln479

**Tags:** N-terminal His Tag

**Subcellular Location:** Secreted

**Purity:** > 97%

**Traits:** Freeze-dried powder

**Buffer formulation:** PBS, pH7.4, containing 0.01% SKL, 5% Trehalose.

**Original Concentration:** 200µg/mL

**Applications:** Positive Control; Immunogen; SDS-PAGE; WB.

(May be suitable for use in other assays to be determined by the end user.)

**Predicted isoelectric point:** 6.6

**Predicted Molecular Mass:** 57.4kDa

**Accurate Molecular Mass:** 57kDa as determined by SDS-PAGE reducing conditions.

**[ USAGE ]**

Reconstitute in 10mM PBS (pH7.4) to a concentration of 0.1-1.0 mg/mL. Do not vortex.

**[ STORAGE AND STABILITY ]**

**Storage:** Avoid repeated freeze/thaw cycles.

Store at 2-8°C for one month.

Aliquot and store at -80°C for 12 months.

**Stability Test:** The thermal stability is described by the loss rate. The loss rate was determined by accelerated thermal degradation test, that is, incubate the protein at 37°C for 48h, and no obvious degradation and precipitation were observed. The loss rate is less than 5% within the expiration date under appropriate storage condition.

**[ SEQUENCE ]**

```

GHRPVDRR  KEEPPLRPA
PPPISGGGYR  ARPAKVDAGQ  KKVERKPPDA  GGCVHGDGDM  GVLCPGCEL
RQTLNHERP  IKNSIAELNS  NINSVSETSS  VTFQYLTLK  DMWKKQAQV
KDNENVINEY  SSILEDQKLY  IDETVNDNIP  LNLRLRSIL  EDLSKIQKL
ESDISAQTEY  CHTPCTVNCN  IPVVSKECE  EIIRKGETS  EMYLIQDTS
SKPYRVYCDM  KTENGGWTVI  QNRQDGSVDF  GRKWDPYKKG  FGNIATNEDT
KKYCGLPGEY  WLGNDKISQL  TRIGPTTELI  EMEDWKGDV  KAHYGGFTVQ
TEANKYQVSV  NKYKGTAGNA  LMEGASQLVG  ENRTMTIHNG  MFFSTYDRDN
DGWVTTDPK  QCSKEDGGGW  WYNRCHAANP  NGRYYWGGLY  SWDMSKHGTD
DGVVWMNWKG  SWYSMRRMSM  KIRPVFPQQ
    
```

**[ IDENTIFICATION ]**

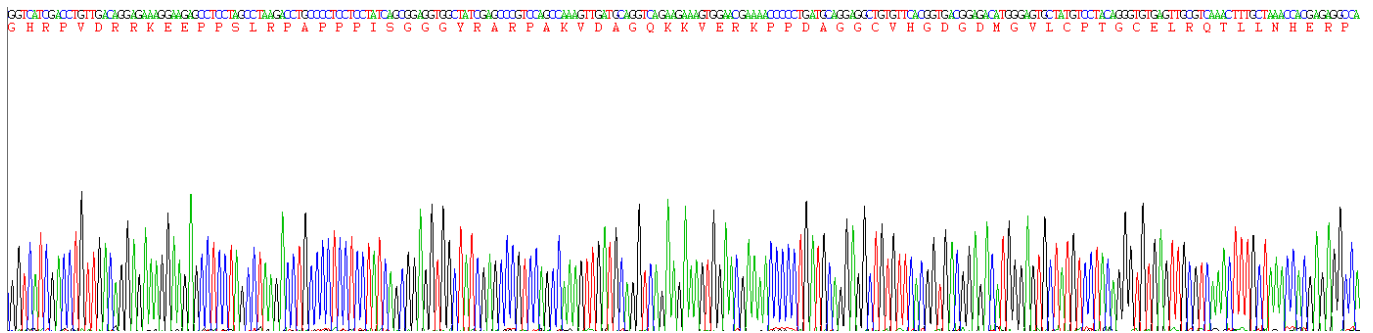


Figure. Gene Sequencing (Extract)

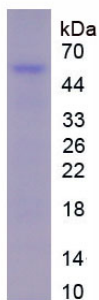


Figure. SDS-PAGE

**[ IMPORTANT NOTE ]**

The kit is designed for research use only, we will not be responsible for any issue if the kit was used in clinical diagnostic or any other procedures.