

RPB907Mu01 50µg

Recombinant Ficolin 2 (FCN2)

Organism Species: *Mus musculus* (Mouse)

Instruction manual

FOR RESEARCH USE ONLY

NOT FOR USE IN CLINICAL DIAGNOSTIC PROCEDURES

12th Edition (Revised in Aug, 2016)

[PROPERTIES]

Source: Prokaryotic expression

Host: *E.coli*

Residues: Gln97~Ser254

Tags: N-terminal His Tag

Subcellular Location: Secreted

Purity: > 97%

Traits: Freeze-dried powder

Buffer formulation: 20mM Tris, 150mM NaCl, pH8.0, containing 1mM EDTA, 1mM DTT, 0.01% SKL, 5% Trehalose and Proclin300.

Original Concentration: 200µg/mL

Applications: Positive Control; Immunogen; SDS-PAGE; WB.

(May be suitable for use in other assays to be determined by the end user.)

Predicted isoelectric point: 6.1

Predicted Molecular Mass: 21.4kDa

Accurate Molecular Mass: 20/19kDa as determined by SDS-PAGE reducing conditions.

[USAGE]

Reconstitute in 20mM Tris, 150mM NaCl (pH8.0) to a concentration of 0.1-1.0 mg/mL. Do not vortex.

[STORAGE AND STABILITY]

Storage: Avoid repeated freeze/thaw cycles.

Store at 2-8°C for one month.

Aliquot and store at -80°C for 12 months.

Stability Test: The thermal stability is described by the loss rate. The loss rate was determined by accelerated thermal degradation test, that is, incubate the protein at 37°C for 48h, and no obvious degradation and precipitation were observed. The loss rate is less than 5% within the expiration date under appropriate storage condition.

[SEQUENCE]

QSCA

TGPRTCKELL TQGHFLTGWY TIYLPDCRPL TVLCDMDTDG GGWTVFQRRL
 DGSVDFFRDW TSYKRFGFSQ LGEFWLGNDN IHALTTQGTS ELRVDLSDFE
 GKHDFAKYSS FQIQGEAEKY KLILGNFLGG GAGDSLTPHN NRLFSTKDQD
 NDGS

[IDENTIFICATION]

TCAGTCATGTGCTACAGG#DCTGG#DCTGC#AGG#AGTTCCTACCC#GGG#CAC#TTCTC#ACTG#CTG#G#TAT#CCATCTATCTG#CCAG#CTCC#AG#DCC#TG#ACTGTGCTGTGTG#CATG#AC#CAGATGGTGA#G#CTGG#DCC#TTC#C#AG#AG#G#CTTG#AC#G#CTCTGTG#ACTTCTTT#G#G#CTGG#DCTCA
 Q S C A T G P R T C K E L L T Q G H F L T G W Y T I Y L P D C R P L T V L C D H D T D G G G V T V F Q R R L D G S V D F F R D W T S

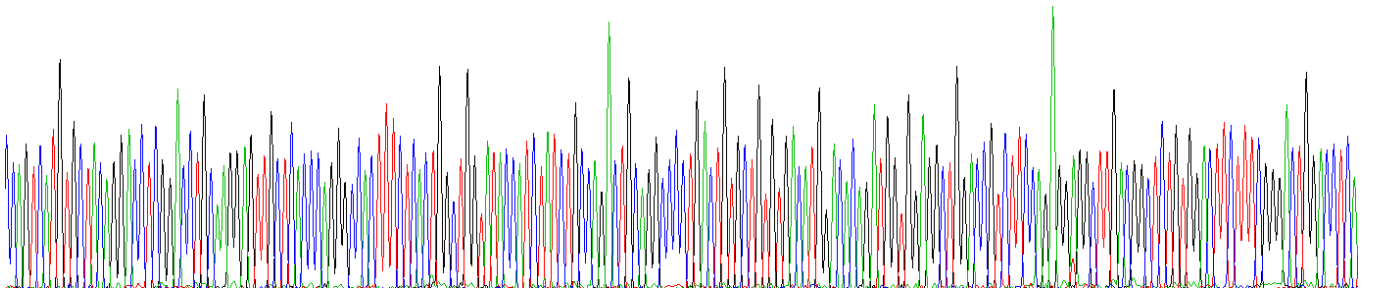
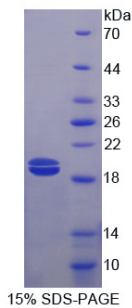


Figure. Gene Sequencing (Extract)



[IMPORTANT NOTE]

The kit is designed for research use only, we will not be responsible for any issue if the kit was used in clinical diagnostic or any other procedures.