

RPA374Hu01 50µg

Recombinant GATA Binding Protein 4 (GATA4)

Organism Species: *Homo sapiens (Human)*

Instruction manual

FOR RESEARCH USE ONLY

NOT FOR USE IN CLINICAL DIAGNOSTIC PROCEDURES

13th Edition (Revised in Aug, 2023)

[PROPERTIES]

Source: Prokaryotic expression

Host: *E.coli*

Residues: Arg201~Ala442

Tags: N-terminal His Tag

Subcellular Location: Nucleus

Purity: > 95%

Traits: Freeze-dried powder

Buffer formulation: PBS, pH7.4, containing 0.01% SKL, 5% Trehalose .

Original Concentration: 50µg/mL

Applications: Positive Control; Immunogen; SDS-PAGE; WB.

(May be suitable for use in other assays to be determined by the end user.)

Predicted isoelectric point: 9.7

Predicted Molecular Mass: 29.8kDa

Accurate Molecular Mass: 30kDa as determined by SDS-PAGE reducing conditions.

[USAGE]

Reconstitute in ddH₂O to a concentration of 0.1-0.5 mg/mL. Do not vortex.

[STORAGE AND STABILITY]

Storage: Avoid repeated freeze/thaw cycles.

Store at 2-8°C for one month.

Aliquot and store at -80°C for 12 months.

Stability Test: The thermal stability is described by the loss rate. The loss rate was determined by accelerated thermal degradation test, that is, incubate the protein at 37°C for 48h, and no obvious degradation and precipitation were observed. The loss rate is less than 5% within the expiration date under appropriate storage condition.

[SEQUENCE]

RHPNLDMFDD FSEGRCVNC GAMSTPLWRR DGTGHYLCNA CGLYHKMNGI
 NRPLIKPQRR LSASRRVGLS CANCETTTT LWRRNAEGEP VCNACGLYMK
 LHGVPRPLAM RKEGIQTRKR KPKNLNKSKT PAAPSGSESL PPASGASSNS
 SNATTSSEE MRPIKTEPGL SSHYGHSSSV SQTFVSAMS GHGPSIHPVL
 SALKLSPQGY ASPVSQSPQT SSKQDSWNSL VLADSHGDII TA

[IDENTIFICATION]

CGCACCCCAATCTCGATAATGTTTGACGACTCTCGAGGCGAGAGTGTCACTGTGGGCTATGTCCACCCCGCTCTGGAGGCGAGATGGACGGTCACTATCTGTGCAAGCGCTGCGGCTCTACACAGATGAAGCGCATCAACCGGCGCTCATCAAGCTCACCGCGCTGTCCGCTCCCGCGAGTGGGCTCTO
 R H P N L D M F D D F S E G R C V N C G A M S T P L W R R D G T G H Y L C N A C G L Y H K M N G I N R P L I K P Q R R L S A S R R V G L S

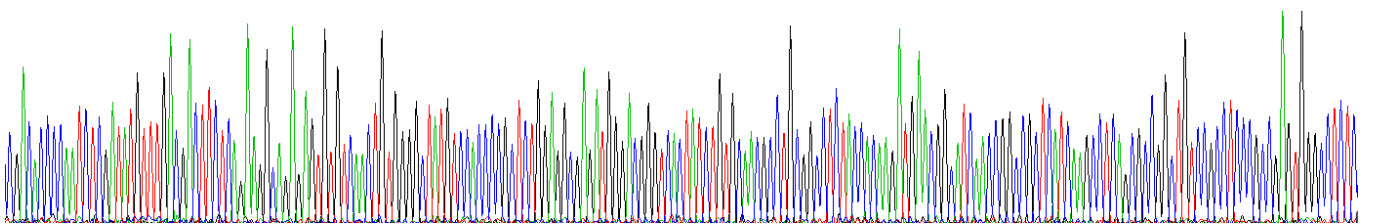
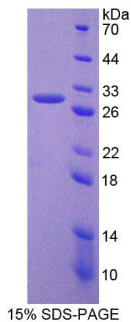


Figure. Gene Sequencing (Extract)



[IMPORTANT NOTE]

The kit is designed for research use only, we will not be responsible for any issue if the kit was used in clinical diagnostic or any other procedures.