

**RPD761Ra01 200µg**

**Recombinant Glutamine synthetase (GS)**

**Organism Species: *Rattus norvegicus* (Rat)**

***Instruction manual***

FOR RESEARCH USE ONLY

NOT FOR USE IN CLINICAL DIAGNOSTIC PROCEDURES

---

12th Edition (Revised in Aug, 2016)

**[ PROPERTIES ]**

**Source:** Prokaryotic expression

**Host:** *E.coli*

**Residues:** Met1~Asn373

**Tags:** N-terminal His Tag

**Subcellular Location:** Secreted

**Purity:** > 95%

**Traits:** Freeze-dried powder

**Buffer formulation:** 100mMNaHCO<sub>3</sub>, 500mMNaCl, pH8.3, containing 0.01% SKL, 5% Trehalose.

**Original Concentration:** 200µg/mL

**Applications:** Positive Control; Immunogen; SDS-PAGE; WB.

(May be suitable for use in other assays to be determined by the end user.)

**Predicted isoelectric point:** 6.8

**Predicted Molecular Mass:** 43.5kDa

**Accurate Molecular Mass:** 44kDa as determined by SDS-PAGE reducing conditions.

**[ USAGE ]**

Reconstitute in ddH<sub>2</sub>O to a concentration of 0.1-1.0 mg/mL. Do not vortex.

**[ STORAGE AND STABILITY ]**

**Storage:** Avoid repeated freeze/thaw cycles.

Store at 2-8°C for one month.

Aliquot and store at -80°C for 12 months.

**Stability Test:** The thermal stability is described by the loss rate. The loss rate was determined by accelerated thermal degradation test, that is, incubate the protein at 37°C for 48h, and no obvious degradation and precipitation were observed. The loss rate is less than 5% within the expiration date under appropriate storage condition.

**[ SEQUENCE ]**

MATSASSHLN KGIKQMYMNL PQGEKIQLMY IWVDGTGEGE RCKTRTLDCD  
PKCVEELPEW NFDGSSTFQS EGSNSDMYLH PVAMFRDPFR RDPNKLVFCE  
VFKYNRPKPAE TNLRHSCCKRI MDMVSSQHPW FGMEQEYTLM GTDGHPFGWP  
SNGFPGPQGP YYCGVGADKA YGRDIVEAHY RACLYAGIKI TGTNAEVMPA  
QWEFQIGPCE GIRMGDHLWV ARFILHRVCE DFGVIATFDP KPIPGNWNGA  
GCHTNFSTKA MREENGLRCI EEAIDKLSKR HQYHIRAYDP KGGLDNARRL  
TGFHETSNIN DFSAGVANRS ASIRIPRIVG QEKKGYFEDR RPSANCDPYA  
VTEAIVRTCL LNETGDEPFQ YKN

**[ IDENTIFICATION ]**

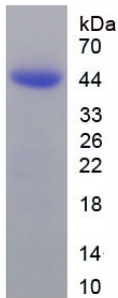


Figure. SDS-PAGE

**[ IMPORTANT NOTE ]**

The kit is designed for research use only, we will not be responsible for any issue if the kit was used in clinical diagnostic or any other procedures.