

RPB314Hu01 50µg

Recombinant Glutathione Reductase (GR)

Organism Species: *Homo sapiens (Human)*

Instruction manual

FOR RESEARCH USE ONLY

NOT FOR USE IN CLINICAL DIAGNOSTIC PROCEDURES

13th Edition (Revised in Aug, 2023)

[PROPERTIES]

Source: Prokaryotic expression

Host: *E.coli*

Residues: Met44~Arg522

Tags: N-terminal His Tag

Subcellular Location: Cytoplasm

Purity: > 90%

Traits: Freeze-dried powder

Buffer formulation: PBS, pH7.4, containing 0.01% SKL, 5% Trehalose .

Original Concentration: 250µg/mL

Applications: Positive Control; Immunogen; SDS-PAGE; WB.

(May be suitable for use in other assays to be determined by the end user.)

Predicted isoelectric point: 7.6

Predicted Molecular Mass: 55.7kDa

Accurate Molecular Mass: 56kDa as determined by SDS-PAGE reducing conditions.

[USAGE]

Reconstitute in 10mM PBS (pH7.4) to a concentration of 0.1-1.0 mg/mL. Do not vortex.

[STORAGE AND STABILITY]

Storage: Avoid repeated freeze/thaw cycles.

Store at 2-8°C for one month.

Aliquot and store at -80°C for 12 months.

Stability Test: The thermal stability is described by the loss rate. The loss rate was determined by accelerated thermal degradation test, that is, incubate the protein at 37°C for 48h, and no obvious degradation and precipitation were observed. The loss rate is less than 5% within the expiration date under appropriate storage condition.

[SEQUENCE]

MACRQEP

QPQGPPPAAG AVASYDYLVI GGGSGGLASA RRAAELGARA AVVESHKLGG
 TCVNVGCVPK KVMWNTAVHS EFMHDHADYG FPSCEGKFNW RVIKEKRDAY
 VSRLNAIYQN NLTKSHIEII RGHAFTSDP KPTIEVSGKK YTAPHILIAT
 GGMPSTPHES QIPGASLGIT SDGFFQLEEL PGRSVIVGAG YIAVEMAGIL
 SALGSKTSLM IRHDKVLRSF DSMISTNCTE ELENAGVEVL KFSQVKEVKK
 TSLGLEVSMV TAVPGRLPVM TMIPDVDCLL WAIGRPNTK DLSLNKLGIQ
 TDDKGHIIVD EFQNTNVKGI YAVGDVCGKA LLTPVAIAAG RKLAHRLFY
 KEDSKLDYNN IPTVVFHPP IGTVGLTEDE AIHKYGIENV KTYSTSFTPM
 YHAVTKRKT CVMKMCANK EEKVVGIHMQ GLGCDEMLQG FAVAVKMGAT
 KADFDNTVAI HPTSSEELVT LR

[IDENTIFICATION]

AAGCTTGCATGACCTGCAGGCAGGAGGCGCGGCGGCGCGCGCGCGCTGCTGCGCGCGTGGCTCTATGACTAAGTGGTGTTCGGGGCGGCTGCGCGGGCTGGCCAGCGCGCGCAGGGCGGCGAGCTGGGTGCCAGGCGCGCGCGTGGTGAGAGGCCAAGCTGGGTGC

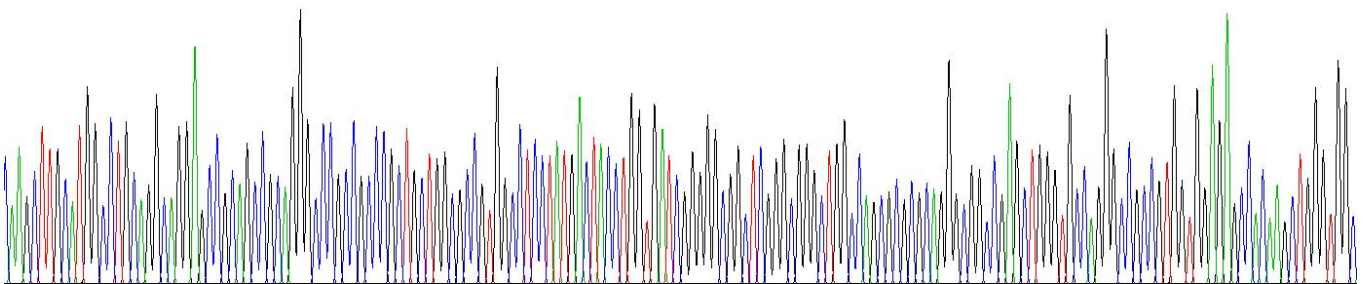
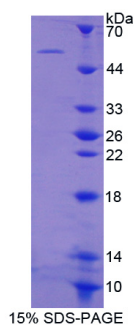


Figure . Gene Sequencing (extract)



[IMPORTANT NOTE]

The kit is designed for research use only, we will not be responsible for any issue if the kit was used in clinical diagnostic or any other procedures.